

The Cleobury Clarion

SERVING CLEOBURY COUNTRY

May 2017

MAJOR STAR TO OPEN THIS YEAR'S C M LECTURES



Professor Mary Beard will be the big name to open this year's series of Cleobury Mortimer Lectures.

The Cleobury Mortimer Lectures that were launched last year proved to be a success worth building upon. Now organiser Robert Hodge has managed a considerable coup by persuading Professor Mary Beard to conduct the opening session of the 2017 Lectures.

Mary Beard is Professor of Classics at Cambridge

University and a Fellow of Newnham College, who is also known to many as both an author and a broadcaster. Her subject will be "What did the Romans do for Britain?" We do know that they built a fort at Walltown, out on the Bridgnorth road, but Professor Beard's view will be less parochial and far better informed than these words. Such an authoritative speaker will be well worth listening to and tickets are expected to sell quickly.

The series is a History Society venture, led by Robert Hodge, and all lectures will be in the Parish Church. Tickets for the opening lecture will be £5.00 each, available from the Library, the Cleobury Cafe, the church office in the Market Hall or on the door, subject to availability. All proceeds from the lectures - the next will be on June 15th - will be donated to the work of the Saint Mary's Youth Project.

Congratulations are due to Robert Hodge on having the concept and turning it into such a success in a very short time.

THE LOCAL ELECTION

There will not be a Parish Council election on May 4th, as less than the statutory nine members of the body have stood. So they are automatically drafted into office, with the ability to co-opt extra members to make up the number if necessary.

For the Unitary (what we used to call County) Council it's a different matter, with five candidates seeking your vote for just two seats to represent this area. That's a healthy sign, if more people want to be involved in guiding our future development.

This is an area where party loyalties are normally declared and the main established parties are all represented, with the exception of Ukip. Each candidate has set out their case in a very concise form on Pages 11 and 12, a much quicker read than the leaflets you normally get through the letter box. That's a good habit, setting a strict limit and preventing unnecessary waffle.

Tickets online: www.cleoburylectures.uk



Gilbert Carter

Specialist Joinery

- Built in Wardrobes
- Double Glazed Wooden Windows
- Staircases
-

Email: Gilbertcarter51@gmail.com
www.gcartersmartjoinery.com

01299
270626

Qualified tradesmen, fully insured

CLEOBURY FUNERAL DIRECTORS

Incorporating Wyre Forest Funeral Service

'The Local Family Funeral Company You Can Trust At Your Time Of Need'



UNDER THE PERSONAL SUPERVISION OF ADRIAN SATTERLY

Our reputation has been built on trust and professionalism. All our attention is concentrated on satisfying the needs of our clients and their families. Your neighbourhood is our neighbourhood and as Cleobury's only resident Funeral Director, with over 15 years' experience in arranging and directing funerals, we take personal pride in serving you well.

- * Pre-Payment Funeral Plans
- * Home Visits Available
- * Horse Drawn Funerals
- * 24-Hour Service
- * Monumental Masonry
- * Catering & Venue Arranged



'It is a rare privilege to be a Funeral Director, to stand in a sensitive position at a crucial time, in the midst of your family, knowing that the quality of our service, knowledge and reputation will help you through this difficult time in your lives'

9, TALBOT SQUARE, CLEOBURY MORTIMER

www.cleoburyfuneraldirectors.co.uk

TELEPHONE: 01299 540541 or 07450 764214

'Serving the local communities with dignity & understanding'

The Cleobury Clarion, May 2017

Volume Fifteen - Edition Two



Welcome to Sue Ryder
See Page 7



Not quite what you'd expect to
see on a Herefordshire street.
The Bromyard Speed Festival.
See Page 17.



Pain Relief is their speciality.
In Business - Page 55

And On Other Pages....

- | | |
|-------------------------------|-------------------------------------|
| 5 - Meet the Air Ambulance | 32 - The Social Calendar - Part One |
| 9 - From the Bandroom | 33 - The Social Calendar - Part Two |
| 11 & 12 - The County Election | 35 - Clarion Coppers |
| 13 - From the Bandroom | 37 - On the Buses |
| 15 - The Clarion Jobs Page | 39 - Mystery Picture |
| 19 - Severn Edge Vets | 41 - May in the Wyre Forest |
| 21 - Help Plan Town's Future | 45 - Book Review - 2nd Oracle Boy |
| 23 - Samuel Auchmuty | 49 - World War One Heroes |
| 25 - Rupert's Revenge | 57 - Our Rugby Heroes |
| 27 - Philip Dunne MP | 59 - Return of ASBO Rabbit? |
| 29 - Christian Aid Week | 61 - Lost and Found |
| 31 - Gill Chapman | 63 - Local Information |

**The Clarion is on the web
from the 4th of every month.
www.cleoburyclarion.co.uk
All 64 pages and the adverts**



YOUR
HAIR
IS
OUR
BEST
ADVERT

RED HARE SALON

45 HIGH STREET
CLEOBURY MORTIMER
WWW.REDHARESALON.CO.UK

01299 270702

Agricultural Team Legal specialists in all things rural

- Planning, Land Registration and Development
- Buying and Selling Farms and Rural Property
- Sporting and Fishing Rights
- Restrictive Covenants
- Farming Dispute Resolution
- Business Diversification
- Tenancy Agreements
- Tax Matters for the Farming Community



www.painters-solicitors.co.uk

*Serving the Wyre Forest
for over 60 Years*

For more information contact:
Nicholas Hughes on 01562 822295 or Wendy Beaumont on 01299 822033

CLOWS TOP GARDENING CLUB

May for many gardeners is one of the best months in the garden, with the freshness of spring and the promise of an even better summer full of colour. A wide selection of summer bedding plants will be on show at the nurseries and garden centres. Resist buying too early unless you have a frost free greenhouse, conservatory or cold frame to keep them in, as the majority of these plants are still quite tender.

As the temperatures rise your prized plants will spring to life, but unfortunately so will any unwanted weeds. Pull up any seedlings and dig out perennial weeds with a fork to try and get rid of any roots. Time and effort spent on these will benefit not only your borders but also your lawn, as May is the ideal time to identify those nasty dandelions and deal with them.

If you have a pond, pond weed is equally important to deal with and should be removed regularly before it becomes too difficult to manage and harmful to pond life. Make sure you leave any weeds by the side of the pond for a good while before removing just in case any pond life is hiding there! May is a great time to begin stocking ponds with fish, just make sure any aquatic plants have established first.

You may find you need to clip any hedging and topiary now to keep its shape neat and tidy. The

warmer weather will also mean regular mowing of the lawn will be a necessity now and throughout the summer.

The March meeting was the Spring Show and the Club would like to thank Derek Walker for judging. The winners were: 3rd Kath Thornton, 2nd Bob Marriott, 1st and Best Exhibit won by Marion Wilson.

Please come along to our Plant Sale and Coffee Morning on Saturday May 14th, 10 till 12 noon.

Our next meeting will be on May 24th and the speaker for the evening will be Nick Poultney on Composting

Pauline Bowen

MEET THE AIR AMBULANCE

Not in an emergency situation, but over afternoon tea at the Mercure Hotel in Bewdley on May 21st. Tickets are £15 each, music will be provided by local ensemble 'Sing and Tonic' and all moneys raised will go to help keep this vital service in the air.

It starts at 3.00 and you can book your tickets through Tracy Phillips on 07775 601 712 or tracy.Phillips@jupiterhotels.co.uk

JOIN THE PANTO

This is very early notice for a pantomime, but those very keen people who entertain at Clows Top every Christmas are looking for talent to join their cast.

They start rehearsals in September, everyone is welcome to apply and costumes will be provided. For more details call

01299 832229 and they'll explain all. Who knows, you could be a star waiting to be discovered.

THE HORTICULTURAL SOCIETY

William Scott led an enjoyable evening at our April meeting on sharpening garden tools. Many of us had brought along tools in varying state of sharpness and cleanliness. William gave us facts; Sharp tools give a cleaner cut and are easier to use; any stone with a lot of quartz or silica in is good for grinding the knife or blade; always sharpen the bevelled side, never the flat; move the grinder down with pressure keeping at the angle of the cutting edge and never pull it back up. After a while, feel along the flat edge and you should feel a little burr, when you can, your blade is sharp. He gave us four rules to remember: before sharpening, clean the blade; tighten any mechanism if there is one eg secateurs or scissors; use the file or grinder on the bevelled side remembering only to push down; oil the blade and spring if there is one. We were all guilty of not cleaning our blades.

Our May meeting on the 12th will see us taking a trip to the RHS Malvern Spring Festival. Before that we will be holding our Spring Plant Sale on May 6th, in the Market Hall from 9-30 until 11-30, when we hope many of our members will come along and give their support.

Liz Smurthwaite

The Clarion is on the worldwide web, from the 4th of every month

www.cleoburyclarion.co.uk

We have readers in Hong Kong, New Zealand and America.



CM BESPOKE CARE

CareQuality
Commission
Registered

S P C
Shropshire Partners In Care

Personal, Nursing and Domestic care.
Tailored to your needs.

Call for a free consultation

Tel: 01746 718816
Mobile: 07943834132

www.cmbcare.co.uk
www.facebook.com/cmbcare
email: cmbbespokecare@btconnect.com



DRY CLEANING & LAUNDRY SERVICE
20 HIGH STREET, CLEOBURY MORTIMER
01299 270571
HOUSEHOLD & COMMERCIAL WORK WELCOME
FULLY ATTENDED, OPEN 7 DAYS

Self Service ~ Full Service Wash/ Dry/ Fold/ Ironing ~ Large Machine for Big Items
Service Washing for Duvets/ Blankets/ Sleeping Bags ~ Team Sports Kit Laundry Service
Equestrian Rug Cleaning ~ Laundry Service for Pet Items
Professional Shirt Service ~ Nikwax Wash & Proof for Outdoor Clothing

.... the place to air your dirty laundry!

TDC CARPENTRY SERVICES

- Fully insured qualified professional
- Excellent workmanship and quality customer care
- From hanging doors, fitting kitchens to bespoke projects

Tim Clare - 01299 270568 / 07890 519980

John Brazier & Co

Accountants & Business Advisors

Accounts – Company, Partnership and Sole Trader
Tax Returns – Corporation Tax and Personal
VAT - Returns and advice
Payroll Service including RTI

For a personal and
professional service

Contact John Brazier or Sarah Morgan to discuss your requirements on 01299 271473 or email at info@johnbrazierco.co.uk. Alternatively, you can arrange a meeting at 53, High Street, Cleobury Mortimer, Worcestershire DY14 8DQ

01299 271 473

SUE RYDER - A LONG RECORD OF CARING

It's a hard fact of life that we all face death in the end. But the number of people who care enough to help make the final days as comfortable as possible and show love and compassion is a measure of one of society's greatest assets.

Sue Ryder is a leading charity, founded by a member of the World War Two Special Operations Executive who saw such suffering amongst the homeless that she devoted her life to them. What started with the conversion of her family home to house refugees has grown to become a worldwide charity with shops in most UK towns, plus seven hospices and five neurological centres. Care for cancer patients has become one of their specialist services, all part of providing 2.7 million hours of care each year.

Our nearest shop is at 62 Broad Street, Bewdley, where Lisa Shelley has been manager for three years, after learning the business at the Ludlow branch. The charity has 450 shops in the UK and all goods donated are sold to raise funds to support the nursing service.

"This is a £2.00 shop," Lisa explained. "Everything that's

donated is sold for £2.00 or less." The exception is a range of goods bought in, such as garden items, knitting wools and greeting cards, that justify a higher price.

It's a busy, buzzing place, with a constant flow of customers looking through the clothing and other goods, one man asking about shoes, all dealt with in a friendly manner by the volunteers who man the counters. "I've got a great staff of 11 volunteers, but we do need more of them," said Lisa, who has a friendly approach to management. Her smiling manner reflects in the whole approach to customers; you feel welcome.



Lisa Shelley does the job of manager with a winning smile.

Lisa explained what the staff gain from their involvement in the shop: "We're advertising for volunteers, who can put in 16 hours a week; if you can do that you earn an NVQ certificate that can help you get a paid job if you're looking for one. There's no age barrier, and the oldest volunteer has just retired from the shop at 87." We forgot to ask if that lady took her NVQ to help find another post!

The shop is open from 9.00 to 5.00 from Monday to Saturday and as well as the vital serving of customers there's the matter of keeping the place tidy and the stock prepared for display. There's also the great job satisfaction of knowing you're part of a very effective and caring charity.

The running of the shop is not without its worries, and Lisa's big concern at the moment is the parking restrictions that make loading and unloading less than easy. There's a reasonable size car park in Dog Lane, behind the shop, but that's been reduced in size, and when the town is busy finding a space is not easy. But this happy shop and its smiling staff who don't rush customers and offer such good value will draw them in, once people discover the place and its values. **01299 405590.**

Clows Top Garage
Clows Top
Tenbury Road
Kidderminster
Worcestershire

Poppys Garden Benches

Telephone: 01299 832227



Quality Handmade Heavy Duty Picnic Benches



Mobile: 07812559530



From a choice of either strong solid timber or beautiful Welsh cedar wood. These handcrafted benches are a must have.

Unlike flat pack benches, these are quality constructed with approximately 2 Inch thick solid wood.

Due to the sheer size and weight of these benches we do offer delivery. For more information on this, or any general enquires please contact us.



Email: D_Tramontana@hotmail.co.uk

Website: www.poppysgardenbenches.com

Professional. Affordable. Local.



Electrical Installations

No matter the size, we can gladly undertake all Domestic, Commercial and Industrial installations you require.

A family run business, with over 25 years industry experience.

From period properties to agricultural solutions, we provide a professional service every time. We also do call outs and emergency work.

Renewable Energy

Protect yourself from rising energy bills by considering renewable energy.

Solar PV is the most accessible way you can save energy by producing electricity from the sun. Earn a tax free income from the electricity your system produces.

Speak to us about how renewable energy can benefit you or your business.

Whatever your query, give us a call.

T: 07971 096267 / 08450 564173

W: www.awe-services.co.uk

Two Staks, Eagle Lane, Cleobury Mortimer, Worcs. DY14 8RA



CLEOBURY W.I.

We had great fun making our memory bangles at the April meeting. Laura from mmmjewellerydesign brought such a selection of pretty beads that every finished article was very different.

On Tuesday May 9th Charles Hadwell will be speaking on Samuel Thorpe, Abberley clockmaker and later in the month this will be followed by a tour of Abberley Hall and the clock tower. All are welcome to the market hall at 7.30pm, more information on Cleobury Mortimer WI's Facebook page or contact me on [01299 270983](tel:01299270983) or email judysant10@gmail.com.
Judy Sant

THE SPORTS AND SOCIAL CLUB

Refurbishment of the Club's toilet facilities has not been without its problems, however Paul Southall has worked tirelessly to overcome them and the work approaches its completion, resulting in a brighter, more modern look.

The AGM was held on 6th April, with Guy Turpin returned as Chairman for his third and final year. Like any non-profit making organisation, the Club relies on volunteers, either as

committee members, or helping hands to call on when needed, to actively participate in helping to run events. We all lead busy lives and we realise this involves time and effort, however if you would be willing to help, then please contact either Andy Goold or Guy, via the Club's Facebook page or on [01299 271488](tel:01299271488).

The Easter Egg Hunt on 14th April saw 67 children looking for where the Easter Bunny (Goody!) had hidden their eggs. The Club will be running a Children's Disco on Friday 26th May between 4.00 and -7.00pm. There will also be a Junior Disco in the Club as part of the Village Community Day on Saturday 10th June, more details to follow. The annual Clubfest will be held this year on Saturday 19th August, with the usual Battle of the Bands taking place on the field in front of the building. Organisation is already well under way.

Cleobury's sports teams continue to perform well, especially the Ladies Volleyball Team and the Rugby Club, who have been promoted next season to Division 2 of the North Midlands League.

Finally, all events are posted on the board outside the Club, or

see our Facebook page or telephone Andy Goold on [271488](tel:01299271488)

Glenys Turpin

FROM THE BANDROOM

A small group of us regularly meet with our dogs and go walking. Sometimes around here and sometimes into the Knighton area, where a few of our players travel from to play in our band. We are a very sociable and friendly lot!

There are a few tickets left for our Spring Concert on May 13th at the Parish Hall, playing a popular music programme and fish and chips will be served in the interval. Tickets are available from Carrot Tops priced at £10 or phone to reserve tickets with me on [01299 270262](tel:01299270262); please leave a message and I will get back to you.

Our first bandstand engagement of the season will be at Malvern on 21st May, usually a lovely day in the Winter Gardens with lots of people lazing around and enjoying a picnic whilst listening to the band play.

Our website lists our forthcoming engagements and also has contact numbers for both senior and training bands.

www.cmcb.org.uk

Katie Griffiths



Home Support Services

All staff enhanced DBS checked with over 20yrs experience and training within the local authority/social services mainstream and dementia care sector. Fully insured.

Are you in need of support with the following basic day to day tasks?

Assistance during the day or night	Completing Forms
Companionship	Pet Care
Shopping/Household tasks	Attending social events/ appointments

Contact Liz
Tel: 01299 271623
Mob: 07826 929222
liz@lifelifeathome.co.uk

Other support services available on request.

www.lifelifeathome.co.uk

Contact Tracey
Tel: 01299 211660
Mob: 07957 659909
tracey@lifelifeathome.co.uk



Bayton C of E Primary School, where our mission is

TO BE THE BEST THAT YOU CAN BE!

A school full of joy, inspiring our children to achieve their potential and to thrive and enjoy their learning experience, leaving confident in their abilities and ready for secondary school.

For further details about our school, contact the office on 01299 832393. Alternatively, visit our new website at www.baytonprimaryschool.co.uk

Cleobury Freezer Centre

6 Newhouse Farm - Tenbury Road - Cleobury Mortimer
01299 271345

Our huge range includes the following, with many more items available

Fruit

Strawberries
Raspberries
Blueberries
Cranberries
Blackcurrants
Redcurrants
Apple Chunks
Mango Chunks
Summer Fruits
Forest Fruits
Rhubarb

Vegetables

Button Sprouts
Broccoli
Cauliflower
Honey Parsnips
Peas
Mushy Peas
Baby Onions
Baby Carrots
Asparagus
Stir Fry Mix
Whole Beans

Free Delivery
For all orders over £20

Opening Hours
Mon—Fri 0900-1800
Sat 0900-1200



Mr Daves

Chicken Balti
Lamb Balti
Chicken Tikka
Rogan Josh
Thai Red Curry
Chicken Korma
Prawn Balti
PLUS
Garlic and
Coriander Naan
Garlic Slices

Individual Fish Fillets

Cod
Haddock
Salmon
Tuna
Swordfish
Kippers
PLUS
Prawns
Scallops
Mussels

The Unitary Council Election: The Candidates

The Clarion asked the candidates in the May 4th election to explain their qualifications and aims to you, the electors. These people are seeking to take on an important and demanding job for the community and deserve your attention and votes on the day.

GWILYM BUTLER



We have achieved a lot for our community while I have represented you over the past ten years. There is still a lot to do in a time of major change.

The country has gone through much austerity over the past nine years. However, I am pleased to report Cleobury and the surrounding area are in a strong position to move forward in changing times. We have achieved several new facilities: medical centre, car park, public toilets, to name a few. However we need to fight for the future of services both local and national in the rural areas moving forward.

In my time as your representative I have been fortunate to be part of the team specialising in communities, voluntary sector, libraries and leisure services. This has helped me have a strong influence in Shrewsbury to make sure we have our fair share of council facilities. There is much to fight for: public transport, youth facilities, road repairs, ££££££££££ care for the elderly, to name a few.

I have also represented Shropshire at National level on the Rural Services network a

body that lobbies central government for fairer funding for rural areas. If elected I will hopefully continue taking our fight for fairness national.

Thank you for your previous support and please support me by voting for a further term for a strong, fair voice for Cleobury and surrounding area

BRETT JENKINS

I'm running to be one of your councillors for the Cleobury Mortimer ward at Shropshire Council.

The main reason that I have felt compelled to stand is because I have been horrified by the way the Tory run council has consistently cut services. For example, it is very troubling that the sports hall is still at risk of closure, which would mean even fewer things for young people to do in Cleobury, and could lead to poorer health for the town's residents.

I am a software engineer and feel that Shropshire is failing to embrace the technological industries, as with proper investment in broadband and phone coverage our rural location should be no barrier. We should welcome and encourage more technology firms to Shropshire, to create jobs and improve the county's finances.

I am Chairman of the Ludlow branch of the Liberal Democrats; the branch covers the Cleobury Mortimer ward as well as the three wards in Ludlow and the Clee ward. The Liberal Democrats hold these four other

seats and have managed to do so much for their areas such as saving their buses and youth services. I hope to work with these colleagues to ensure that Cleobury Mortimer has the same strong representation at Shirehall, and that the Tories cannot carry on running roughshod over the county's people.



Brett Jenkins and Lucinda Timmins are partners in life and politics.

LUCINDA TIMMINS

I was born and bred in Cleobury, having attended the town's primary school and Lacon Childe. Since leaving, I have gone on to Ludlow College and the University of Worcester, and now work for a large charity. I have seen the town expand in regard to houses and population, but with the exception of the new medical centre, there has been very little investment in facilities for the town. Cleobury needs much more investment in way of facilities and infrastructure for the town to thrive.

Being a regular reader of the Clarion, and specifically Steve Todd's 'On the Buses' section, it

is clear that public transport is an issue for the town. For too long Shirehall has seen our bus service as an issue in a distant small town which is difficult to deal with, as the bus service crosses county lines. It is difficult, but public transport is a lifeline in Cleobury; I know that I could not have attended college without the service to Ludlow.

A large proportion of my age group have had to leave the area to seek work and opportunities, which is a great loss for the area as these are talented people who have so much to offer. Shropshire Council are failing our young people by not offering the homes and jobs they need. A vote for Brett Jenkins and I will ensure that the Cleobury area and all of its residents will be fought for at Shirehall.

JOHN ROGERS



I have lived in Shropshire since 1992, bringing up two children who were educated locally. I was chair of Farlow School at the time when it was finally refurbished and have maintained an interest in local education issues.

I feel strongly about stopping the Tory led Council in Shropshire from cutting our schools' budgets. Cleobury Mortimer Primary School faces in real terms a 13% cut up to 2019, which equates to the loss of three teachers.

The Lacon Childe School faces a budget reduction of £213,629 or six teachers and the same picture applies to schools throughout the Ward. Current education budget in Shropshire is £4550 per pupil. By 2019 this will have reduced by £453 per pupil. An unacceptable cut. I will oppose these changes.

But it doesn't stop at education. We face cuts across all services including social care, youth services, transport and community facilities. That is why I am keen to represent our community and oppose austerity cuts. I will fight to invest in all our local services to make our Ward, and Shropshire, a better place to live.

MADGE SHINETON



I have been your Independent Community and Health Concern Councillor for the last eight years representing Cleobury Mortimer Division. My background was in nursing, especially Accident and Trauma; and horticulture running a local Nursery for over 40 years. I was involved in the early days of the formation of the Federation of Small Business.

During these eight years I have sat on the Licensing, Planning and Health and Social Care Committees and taken part in various scrutiny groups and Appeal panels. I am currently Vice Chairman of the Health and Adult Social Care Scrutiny Committee and Chairman of the Cleobury Area Youth Partnership and Governor of Cleobury Primary School.

My other interests are: Chairman of the Management Sub-Committee for Bridgnorth Transport Group, Director of the Severn Centre, a founder member of the Shropshire Rural Housing Association and member of the Severn Hospice Support Group.

The future of our area, if we make the right decisions and all work together, could be very positive. Caring for people in their own Communities has proved increasingly successful and we have a number of excellent care companies, nursing homes plus the new one being built, which provide a wide range of cover. Our GPs at Cleobury and Stottesdon, with their pharmacies, cover this large scattered area very efficiently. This coupled with the dentist, optician, chiropodist, and various forms of physiotherapy and our wonderful voluntary groups means we are very well provided for.

The lack of reliable public transport is an ongoing problem which I have pursued to the Transport Commissioners, not very effectively. I shall continue to explore other ways of providing this vital link with the rail network.

My thanks to all the candidates for their cooperation in preparing these pages. Jim Reynolds

THE FOOTPATH ASSOCIATION

Another successful work party in April with a second kissing gate installed on the footpath between the golf course and the A4117, leaving one stile right by the road. We cannot remove this one but have made it easier to get over and it does have a dog gate. We also dealt with four fingerposts in the area that had either rotted or been knocked over.

In May we plan to be working at Ditton, making improvements to the path between Dudnill and Hopton Wafers.

Shropshire Council's Rights of Way team have re-instated their annual Plough and Crop Campaign as crops in fields blocking footpaths is the biggest issue for walkers. This is mostly a problem in the summer but can be in the autumn or winter with crops such as sweetcorn and beet.

To make sure persistent cases are dealt with, it is essential that we all report any such incidents we come across. This can be done via the council's own website or if you report the problem to us we will pass it on. Contact us on footpaths@cmfa.co.uk

The Parish Walk on May 7th from St Mary's at 10.00 will be going towards Dinmore Farm beyond the golf course and we will be having an unusual "social walk" on May 20th, entitled The Three Coppices. For a change it will be a 'dawn walk' finishing with breakfast! We will meet at the Golf Club at 6.30am for the five mile route through part of the Wyre Forest and everyone is welcome to join in. More information, booking for the walk and breakfast orders to judyasant10@gmail.com or 01299 270983 *Graham Simpson*

THE READING GROUP

A complete change of subject for our April read, 'The Girl On the Wall' by Jean Baggott (the title refers to a photograph of herself aged 11). A lady born in West Bromwich in 1937 who, inspired by an ornate plaster ceiling, decided to sew a cross stitch tapestry. Jean wrote the book to complement her work, having completed over 70 interconnecting circles that describe various events in her life and world events from 1940's to the 2000's. Written with an easy conversational tone and presented as a series of vignettes, it is a charming and interesting presentation of social history by a workaday person.

Enjoyed by the majority, some found it irritating and several disliked the jumps in time. Perhaps best as a book to dip into as one or two found they lost interest towards the end. Many items mentioned prompted memories of times past, 'the good old days' were hard work and most things in life have improved. We discussed changes in education as Jean's was cut short. Having an interest in history she embarked on a degree in this subject at Warwick University when she was in her late 60's; we thought this a brave move.

Animals feature next, when we read 'An Otter on the Aga' by Rex Harper. On May 15th we will meet at the library to voice our thoughts. Further information from me on CM 271754. *Deana Kimber*

WHAT YOU MIGHT CALL HANDY

Cleobury Country Centre have a one-day course on Manual Handling. It's on May 11th and runs from 9.00 to 1.00pm, the actual course lasting three and a half hours including an exam, after which successful graduates get a certificate from the Chartered Institute of Environmental Health. Cost of the day is £65.00. 01299 272300.



Small Animal Boarding

Pet hotel for Rabbits, Guinea Pigs, Hamsters, Chickens and other small Animals.

- Spacious comfortable accommodation
- Initial inspection welcomed
- Every need catered for
- Competitive rates

www.noahsarkboarding@wix.com/noahsark

Call; 01584 890111 or 07886 982691 email; noahsarkboarding@btinternet.com



BAGGINSWOOD

Bagginswood, Cleobury Mortimer,
Nr. Kidderminster, Worcs. DY14 8NB
Telephone: 01746 718732

HEATH FARM MEATS

Home produced beef, pork, lamb and mutton.
Home cured bacon, gammon, sausages,
cakes, pickles and preserves.

OPEN 8.00 am to 5.30 pm
WEDNESDAY TO SATURDAY
01746 718732

Flowers By Fiona est 1991

Fresh Flowers made to order
Special Occasions
Weddings, Anniversaries, Birthdays
Sympathy Tributes

19a High Street,
Cleobury Mortimer

Tel: 01299 272 995

High Street, Cleobury Mortimer
DY14 8DX
TELEPHONE: 01299 271798

*Bowkett's
food
Emporium*

Open:~
Mon to Fri 8.30am - 5pm & Sat
8.30am - 2.30pm

Quality locally sourced meats and poultry cut and prepared
by Lewis & Brett our skilled butchers

Bowkett's Gold Award Winning Traditional Pork Sausage - Cooked meats and British & continental cheeses -
Award Winning Speciality Sausages and Bacon, Bowkett's home-made Faggots, Lasagne, Cottage Pies,
Sausage Rolls, Pork Pies, Scotch Eggs, Quiches and Coleslaw
Sandwiches & baguettes while you wait or call our friendly staff who will be happy to take your order
Hot tasty succulent chickens, sausage rolls and pasties
Delicious tasty baguettes and rolls baked on the premises and much more.....

 Bowkett's Food Emporium



MARK WILLIAMS - PROFESSIONAL WILLWRITER

"A lifetime's attention to complex legal issues as a retired Detective Superintendent and now a Private Client Lawyer, means **you can definitely trust Mark** to write your Will."

Wills from £75, Free Will Reviews, 50% off Lasting Powers of Attorney,
Probate Support, Care Home Fee Avoidance
& Big Savings on Funeral Plans
Instructions taken in the comfort of your own home or workplace

T: 01299 251442 M: 07966 053887 E: mark@ambalegalservices.co.uk
www.ambalegalservices.co.uk

Fellow of the Institute of Professional Willwriters & Trading Standards Approved



Shropshire
Fire and Rescue Service

**On-Call Firefighters Cleobury Mortimer
(Retained Duty System)**

Shropshire Fire and Rescue Service is currently looking to recruit on-call firefighters at Cleobury Mortimer Fire Station. On-call firefighters agree to be available for a certain number of hours per week; they carry a pager and must be able to get to the fire station within five minutes. For this they are paid between £1,587 - £2,116 per annum (dependent on contract) as a Retaining Fee plus payments for attending incidents and drill evenings at Cleobury Mortimer fire station.

TO APPLY YOU MUST LIVE OR WORK WITHIN 5 MINUTES OF CLEOBURY MORTIMER FIRE STATION

To be a Firefighter requires special skills and qualities, not only do you need to be able to work under pressure as part of a team at operational incidents you need effective communication skills to deal with the public at fire safety events and in their homes. You will work within your local community to support our aim of preventing fire related incidents and road traffic collisions. The Service is looking for people aged 18 or more on their start date who can demonstrate a high level of physical fitness

For an information pack please contact us on 01743 260220, or email HRAssistants@shropshirefire.gov.uk, stating your name, address and quoting Cleobury Mortimer

Shropshire Fire and Rescue Service is committed to equality and diversity at work. We positively welcome applications from disabled people and minority groups who are under-represented in our Service.

***Boys/Girls Wanted for Paper Round
Please contact Simply Fresh on 01299 270182
for more information.***

**Midland Civil & Groundwork Ltd are looking for a Self-Employed Worker, to help us in groundworks construction.
We use the HMRC (CIS) Construction Industry Scheme therefore a (UTR) Unique Tax Reference for the deductions is required.
Check our Facebook page for the type of work undertaken.
For more job details please call Stephen on 07767 386444.**

Job Title/ Company	Job Requirements	How to Apply
Lower Street Garage Administrator	A busy family run garage based in Cleobury requires a part time office administrator. Three days a week, 8.30am—5.30pm. Good IT skills and customer service skills essential. Knowledge of payroll an advantage but not essential	Please contact Marie on 01299 270208.

HOPTON BUILDING SERVICES LIMITED

All Aspects of Building Work Undertaken

BANK HOUSE, STOCKHALL LANE, HOPTON WAFERS, WORCESTERSHIRE, DY14 0EG

Tel: 01299 270 870 Email: hoptonbuilding@yahoo.co.uk Mobile: 07977 495 163

Hopton Building Services is an established local contractor providing a full and comprehensive service in all aspects of building work from New Developments to Maintenance and Repairs.

Drawing on over 30 years' experience in the construction industry working for Local Councils, Housing Associations, Private Owners, Insurance Company's we specialise in:

- Disabled Adaptations
- **Full Central Heating Installations and Boiler Replacements**
- **Gas/Oil/Solid Fuel Appliance Services, Breakdown and Repairs**
- **LPG & Park Home Trained and certified**
- Property Extensions, Refurbishments and Alterations
- Roofing Works – Fibreglass Flat Roofing & Traditional Roofing.
- Full Bathroom, Shower and Kitchen Installations
- Damp Proofing
- Insulation Works
- Woodburner and Flue Installations
- Asbestos "Non Licensable Removal"
- General Building, Repairs and Maintenance Works
- UPVC Works
- Insurance Works

Our operatives are fully Qualified and Registered Gas Safe, HETAS, **OFTEC Engineers for Gas, Oil and Solid Fuel Appliances**, KBBBI Registered and CRB (DBS) checked.

All works carried out are fully guaranteed and comply with all current regulations.

Please call us for a free survey and a very competitive price.

The Fighting Cocks Inn Stottesdon



An historic inn, officially dating back to 1830 as a pub, but older as a coaching inn, and a brew house. The Fighting Cocks is famed for its passion for local produce, real ales, and initiatives to support the local community. We sell local produce from the pub and shop including local fruit, vegetables, meats, and of course the pub's famous homemade pies. Homemade puddings are also served both in the pub and the shop - but you will need to get here early!

Steak Nights Every Friday
10oz local ribeye or rump
Only £9.95

Senior citizen lunches
Tuesday to Friday
12:00 – 2.30pm

Live Music
Saturday Evenings



1 High Street, Stottesdon DY14 8TZ ◆ Tel: 01746 718270 ◆ www.fightingcocks.co.uk

BROMYARD'S SPEED FESTIVAL



It's called the Beast of Turin, built there in 1911 by Fiat to break the world land speed record. Its huge bonnet contains a four-cylinder engine with a capacity of 28,500cc and that same year it took the record to an astonishing 116mph. That was faster than any aircraft of the same period!

And on April 2nd the Beast was let loose on the streets of Bromyard, along with the 27,000cc 'Babs' that hit 171mph in 1926, driven by Parry Thomas on Pendine Sands. The noise was deafening, the spectacle spell-binding.

There were cars and motorcycles of all ages on parade, parked in whatever space could be found as crowds walked through the town. There was no admission charge, just a happy atmosphere to enjoy and traders renting stalls to sell a

range of goods. Last year the event raised £4300 that was handed over to local charities. So good news all round.



The Hillegass Ford Special

We chatted to Doug Martin, whose 1937 Hillegass was one of 200 racers built by the man of that name. This 3285cc V8 Ford powered version was used for competition on small oval tracks that once flourished in America. Doug rebuilt it and races it with the Vintage Sports Car Club in this country, an attractive little car using basic Ford components and providing fun.

Fun is really what the day was about. No racing, just parades of a huge variety of vehicles. Like a horde of Laverda motorcycles, built by an agricultural company in Breganze, Italy, and imported

by the local Slater Brothers. The bikes were led by Dave Minton, a journalist who knew the company well and rode through the hills with Massimo Laverda.



Well, we did suggest that it was not a serious event. This mobility scooter was cornered fast enough to lift the inside front wheel!

Having discovered this lovely event, we were disappointed to hear that in 2018 it will move to Shelsley Walsh and have vehicles climbing that famous hill. The amount of work to get Bromyard's roads closed must be immense, so an easier venue next year, then it will be back on Bromyard's streets in 2019. Never mind where it's held, if you get the chance, do go along and simply enjoy. Marvellous!

Style House Salon

Your modern salon suitable for all ages

01299

271919



38 High Street,
Cleobury Mortimer
DY14 8DQ



TURNERS GATES

bespoke sizes at standard prices



A small family run business specialising in quality wooden gates to suit all entrances.

Visit our website: www.turnersgates.co.uk

Drop us an email: turnersgates@outlook.com

Or give us a call on: 01299 270 965



Quality financial advice for family, for business, for life

I provide a comprehensive financial planning service offering specialist face-to-face advice tailored to you. My services include:

- Investment Planning
- Business Planning
- Retirement Planning
- Intergenerational Planning

I offer a no obligation initial discussion simply to establish whether I can help you. Please contact me on 07576 484494.

de Courcy May Wealth Management

Email: jon.may@sjpg.co.uk

Mobile: 07576 484494 | Tel: 0121 7336733

Website: www.dcmwm.co.uk

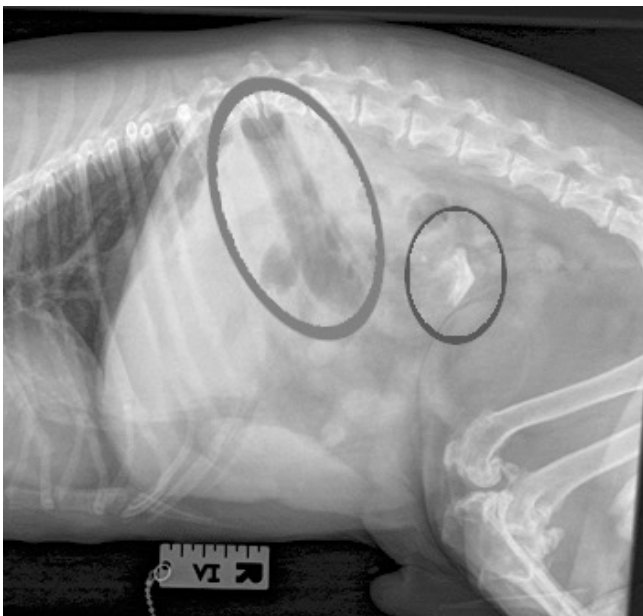


de Courcy May Wealth Management represents only St. James's Place Wealth Management plc (which is authorised and regulated by the Financial Conduct Authority) for the purpose of advising solely on the Group's wealth management products and services, more details of which are set out on the Group's Website www.sjp.co.uk/products.

Pocket is a cheeky yet placid Jack Russell Terrier cross belonging to Sandie, our head receptionist here at the Severn Edge Vets Bridgnorth Hospital. He came to us one day a few months ago vomiting on and off after happily spending the day, like he had done so many times before, at the horse yard while the farrier did his work.

After having some medications to make him feel less sick we decided to keep a close eye on his condition since he was happy enough at this point and not too uncomfortable in his tummy when we had a poke! After 12 hours Pocket showed no sign of getting any better.

At this point I advised Sandie that we ultrasound and x-ray Pocket's abdomen as I was concerned he may have something stuck.



Unfortunately my hunch was right and we found something solid lodged in his intestine (see image). Here you can see the intestine is filled with gas (dark area) and a solid piece of something! (bright white bit). On the ultrasound we also found some small pockets of fluid around the area of intestine. This is concerning as it could be a sign of inflammation and the start of peritonitis.

I spoke to Sandie and advised we operate as soon as possible to get the object out as Pocket was starting to pass diarrhoea too, a sign that things are getting worse. Sandie agreed it was the only option.

Upon performing an exploratory laparotomy (fancy words for opening him up) we found that the part of intestine that had an object stuck had turned black and was dying.

When we cut into the intestine we pulled out a big clump of horse hoof that he must have eaten when he was with the horses. This hoof had passed through the stomach, down the small intestine and had got stuck at the junction between the small and large intestine (ileocaecal junction). This is quite a narrow area of the intestine. At this point the decision was made to remove the dead section of intestine and stitch the two healthy ends together (end to end ileal anastomosis). This was particularly challenging due to how close the area was to the caecum (an intestinal sac in which some fermentation occurs). Luckily I had another vet, Harriet, with me as this was certainly a two person job. After removing the dead piece of gut, Pocket was stitched up and woken up. He then stayed with us to recover with lots of pain relief and antibiotics.

After a few days with us Pocket was well enough to go home and since then, much to my joy, he hasn't looked back. He's back to wanting to pinch bits of food and Sandie even had to pull some horse hoof out of his mouth when he next went to the yard!!

Pocket did really well but this must be an opportunity to expose the risks of dogs eating horse hoof. Though it can often pass, Pocket is a prime example of what can happen if it doesn't. So to anyone out there whose beloved dog is with them around horses, please be careful and watch out for them eating hoof!

By: Dr Dan Nicholls BVMedSci BVM BVS MRCVS

Severn Edge
VETERINARY GROUP

Mobile Vet Service

RCVS
REGISTERED
XL

'No stress and all the home comforts'
Available Mon-Fri, 9am-3pm
01746 713 914

Terms and Conditions Apply. Severn Edge Veterinary Group is the trading name of Severn Edge Veterinary Group Limited, a limited company registered in England & Wales, no. 9522786.

www.sevg.co.uk

Ashley's Bakery

Supplying fresh bread, daily from Ashley's Bakery in Cleobury Mortimer to our shops at:

Cleobury Cafe Bakery Dept. 01299 271 517

Teme St, Tenbury Wells 07772 743570

Load St, Bewdley 01299 404147

Also available; Bakery Direct to the Trade

& Outside Catering

For more details:

Call 01299 271 283 High Street, Cleobury Mortimer (Est. 1988)

Ashley's Bakery Unit 2, Old Station Business Park, Cleobury Mortimer



Cleobury Cafe

**Breakfast, Lunch and Afternoon Tea
available 7 days a week**

Slush machine & Soft whip ice cream for the Summer!

A hot & cold takeaway service

**Bakery Dept. Selling Ashley's bread & cakes
Grab lunch on the run and pre-order on;**

01299 271 517

**High Street
Cleobury Mortimer**

**Mon—Sat 7am—5pm
Sun 8.30am—4.00pm**

KINLET FAMILY PLAYGROUP

We had a very busy run up to Easter with staff and management working hard to hold a fundraising raffle and sponsored walk.

We must thank local people and businesses for donations to our raffle and egg hunt, which took place during the walk from Playgroup to Kinlet Church.

Without their generosity, and that of the many people who bought tickets, we wouldn't have been able to raise £154.

This, along with the proceeds from the sponsored walk, will go towards the improvements we plan to our outside area over the coming term, which include a new summer house/outdoor classroom, sand and mud kitchen areas, and a new growing area and greenhouse.

Zoe Pearson

THE SOROPTIMISTS

With great sadness we said farewell to our much loved member: Maggie Bayliss. The many addresses read at the funeral service on April 10th paid fitting tribute to a remarkable and wonderful woman. Her untimely death

leaves a void in our club and we will miss her engaging smile.

On a happier note, members manned our stand at the recent Bewdley Community Showcase Day.

Our next Business meeting will be May 4th, 7.30 pm at Baxter Church Rooms, Kidderminster and the Supper Meeting at La Brasserie, Kidderminster, on Thursday, May 18th at 7.00 pm

Elke Jury

HELP PLAN THE TOWN'S FUTURE

Do you have the time, passion and skills to get involved in a new initiative to shape the direction of Cleobury for 2017-2036? If so, we have 4-6 positions for volunteers on a community-led Neighbourhood Plan that will eventually be put to a referendum of the town in 12 to 18 months' time.

Only a Neighbourhood Plan will give our Town the power and influence over County and National Planning to make sure we have the right housing in the right places, with jobs and sustainable infrastructure to match. To date we have had more houses without

improvement to our roads, our sewerage and our power.

We are looking for people with a range of skills and interests in housing, economic development, transport, traffic and Infrastructure, wellbeing and the sustainability of our community. We also need research, copy writing and communications skills to help engage with the community.

We want representatives from business, different age and social backgrounds, and committed to the future of the town.

If you are interested, follow the link to the Notice Board page on the Council Website at http://www.cleobury.org.uk/blog/?page_id=52 for more information and how to apply look on local noticeboards around the town.

With just a few hours a week and a short meeting every two or three weeks, for periods of six months to 18 months, you could help shape the Cleobury of the future.

To discuss contact me at jonbodenham@hotmail.com

Cllr Jon Bodenham



CARROT TOPS



YOUR LOCAL FRESH FRUIT & VEG SHOP

ALSO, AVAILABLE; CLUN VALLEY MEATS, JAMS, PICKLES, CHEESES, PATE'S
WENLOCK BACON, MAWLEY MILK & CREAM, LOCAL HONEY & MUCH MORE
BOX DELIVERIES AVAILABLE TO YOUR DOOR, HAMPERS MADE WHILE YOU WAIT

CARROT TOPS, 28 HIGH STREET, CLEOBURY MORTIMER

COME & SEE US; WE ARE OPEN 6 DAYS A WEEK

MONDAY – FRIDAY 9.00AM – 4.00PM

SATURDAY 8.30AM – 2.00PM

SUNDAY - CLOSED

OR CALL JULIE – 01299 272886 OR 07951 633585

Email: Julie@carrottopsltd.co.uk

WE ARE ALWAYS HAPPY TO HELP

Robert Bradley Logs

07794 798616



*Seasoned Firewood, Hardwood,
Softwood or Mixed loads of logs.
Free Local Delivery*



Produced & bottled at
Mawley Town Farm,
Cleobury Mortimer
01299 270359

Mawley Milk

direct from the cows
to a shop near you!

We guarantee you won't find tastier fresher milk with so little food miles.
Early morning doorstep delivery available in Cleobury Mortimer

Like us on Facebook/Mawleytownfarm

To find your nearest stockist visit our website www.mawleytownfarm.co.uk
email: info@mawleytownfarm.co.uk

THE CRUSTY COB

BAKERY, SANDWICH BAR AND TEAROOMS

Wide range of fresh bread supplied daily, including speciality items

Freshly made sandwiches to take away

Award winning pork pies from Reg. May

Large selection of cakes and confectionery

Telephone orders taken; Delivery service available; Outside catering

Open from 8.00am to 5.00pm, Monday to Saturday
18 Church Street, Cleobury Mortimer Tel: 01299 271190

simplyfresh

Tel: 01299 270 182
2/3 Talbot Yard,
Cleobury Mortimer, DY14 8BQ.

Opening hours:
Mon—Sat 7am—9pm
Sun 8am-8pm

**Local & Seasonal Produce,
Delicatessen Counter,
Organic & Gluten free ranges,
Greengrocery,
Off Licence, Newspapers,
Health Lottery,
General Convenience Store**

WHALEBONE ARE BACK

Whalebone are a well honed local folk trio with a strong following. Two guitars and a violin offering traditional airs in an evening of instrumental entertainment. And this month they're back in the area with their Mirabilia Tour, playing Farlow and Oretton Village Hall on the 27th, first notes to be struck at 7.30. The doors will open at 7.00, so get there early for the best seats.

Tickets are £8.00 for adults and £5.00 for children, available from James and Lucy Shier on 01746 718642. Refreshments and a bar will be available. More about the group at www.whalebone-music.com

ROCK PATHFINDERS

This month's walks with the Pathfinders are:

Thursday the 4th., 7.00 Evening Walk starting from the Lenchford Inn at Shrawley, WR6 6TB or S O Reference 813643. It's on the B4196

Thursday 18th, 10.30 morning start from The Old Beams, Dunley Road, Stourport DY13 0AA or S O Ref 807708.

www.rockpathfinders.16mb.com or Alan on 01299 400304.

THE REVEREND SAMUEL AUCHMUTY

May 2017 sees the centenary of the death of the Reverend Samuel Auchmuty, 32nd vicar of St Mary's, Cleobury Mortimer. He deserves to be remembered as the author of the first major history of our town, published by Jakeman and Carver of Hereford in 1911. In compiling his book, he drew extensively on two earlier publications: a small booklet by Mrs Frances Childe published in 1874, and the Reverend Cranage's book on the churches of Shropshire, published in 3 parts, 1901-11.

Auchmuty's career started in the Army with eight years' service as an officer in the Gloucestershire Regiment before his ordination in 1868. He held a series of posts before July 1897 and his last appointment, Vicar of Cleobury, a position he held for nearly twenty years. He died in post on 9 May 1917, aged 75, although he had already announced his intended retirement.

Copies of his original book are hard to find, and £100 or more may be asked. In 1996 M & M Baldwin decided to make his history more widely available by publishing a new edition,

containing the entire original text with the additions of an introduction and index, and a list of some 300 people who subscribed (before publication) and thus had their names recorded in the book. It can be read on-line on the website of the Cleobury Mortimer & District History Society.

The most important work on the church during Auchmuty's vicariate was the re-boarding and re-shingling of the spire in 1898, at a cost of £415. These shingles lasted until 1993, when structural work to the spire was carried out, as well as re-shingling, at a total cost of over £200,000.

Auchmuty was followed as vicar by Percy Malden, who held the post for 22 years. Auchmuty and his wife are commemorated by two brass plates on the East wall of the St Nicholas Chapel, and Auchmuty himself is named at the foot of an unremarkable stained-glass window in the chancel. One of his sons, Charles George, died in the USA in 1914, and is commemorated by a brass plate at the West end of the nave.

Mark Baldwin

SILLY BIT

If money is the root of all evil, why does the church ask for it?

CLEOBURY MORTIMER CARPETS

Supplying and Fitting of:-

- Carpets
- Natural floorings (Coir, Sisal & Seagrass)
- Vinyls

Carpets supplied by: Victoria Carpets, Fibre Flooring & Alternative Flooring at Unbeatable Prices

Contact Details:-

Address: 26 High Street
Cleobury Mortimer •DY14 8BY

Telephone: H: 01299 270095
M: 07739 186163

Email: garethleach@aol.com

[or check out our new website](http://www.cleoburymortimercarpets.co.uk)

www.cleoburymortimercarpets.co.uk

The Miah Brothers Famous Spice Empire

Bringing great taste and value to Cleobury Mortimer for 17 years



17 High Street, Cleobury Mortimer
6-11pm 6 Days a Week
Acclaimed Indian restaurant with
wide range to suit all tastes.
Sunday Buffet from 12.00pm-
9.00pm.
As much as you can eat for just
£9.95 a head.
Free home delivery up to 5miles
Reservations: **01299 270419**



6/7 Church Street, Cleobury Mortimer
*'Fine bar, excellent food at prices to
suit all pockets'*
Top Value dining.
Our Dine In Meal Deal gives you a:
starter, main course and naan or
rice for just £9.95.
Tuesday to Sunday, 6.00-11.00pm
Reservations: **01299 271485**



57 High Street, Cleobury Mortimer
6-11pm Wednesday- Sunday
Dine at home with the same great
quality our restaurant offers.
Monday- Tuesday
collect Takeaways from
Spice Empire:
Tel: 01299 270419
Free home delivery up to 5miles.
Orders: **01299 271604**

SPICE NEWS:

Orders over £40 come with free bottle of wine. Free Delivery up to 5miles from the Spice Empire & Spice Express.
www.facebook.com/pages/the-spice-empire

Wild at Heart Flowers for your creations

tel: 01584 890 928 & 07526 283377



**Tailored wedding flowers
Inventive funeral flowers,
Wild and wispy
or strikingly modern**



Free Local Delivery Service Covering from Cleobury to Ludlow

Wildatheartflowers@hotmail.co.uk

OPEN GARDENS TRAIL AT NEEN SOLLARS

There will be a three mile Garden Trail around Neen Sollars village on May 14th. It's to celebrate completion of the restoration of the ancient haha that surrounds the 13th century All Saints Church. The Trail will raise funds for both Shropshire Historic Churches Trust, who helped fund the restoration, and the Friends of the church.

You can expect afternoon teas, stalls, a nature presentation and a special service in the church. It all starts at 12.00 noon and there will be horse drawn or motorised transport for the less agile, particularly those wanting to take in a visit to the Live and Let Live pub high up on the road out of the valley. Tickets are £4.00 each, available from the church on the day.

LET'S BACK RUPERT'S REVENGE

Fund raising events are being organised to support a young man called Rupert, who is facing a fight with cancer. It's no surprise that Jack Edwards's family are backing the campaign, which is called Rupert's Revenge.

The first event is Rupert's Revenge Promises Auction, happening at the Old Lion Inn, where Hylton Smith will be persuading money out of people's pockets for a huge range of goods, tickets, services and food. It starts at 7.30 and you can expect the place to be well crowded.

Next up is a Coffee Morning at Broome Park Farm on Catherton Road on Saturday May 20th. It will run from 10.30 until 12.30 with tea, coffee, home made cakes, a sales table and a raffle. Rupert is the grandson of long term Neen Savage W.I. member Judie Beckett and the W.I. are the driving force behind this event.

And a week later, on the 27th, Upper Baveney Farm (DY14 8LD for your sat nav) will offer a 'Coffee, Cakes and Bakes' morning, starting at 10.00. Once more, it's in support of Rupert and his family.

And those of you who have faith, of whatever creed, please remember Rupert in your prayers.

CERTIFICATES OF APPRECIATION

In April the Far Forest and Rock Branch of the Royal British Legion held a presentation event

at the Rock Cross Inn, when Branch Chairman Martyn Carter and Poppy Appeal Organiser, Jim Woods presented Certificates of Appreciation to local individuals, businesses and organisations for their support that has helped make the latest appeal so successful for the Branch.

Martyn Carter said: "The Branch is very grateful for the support we have received from local people that helped boost our contribution to the Poppy Appeal. We are very grateful to all concerned."

The Branch raised £5860.24 during the Appeal which includes donations from collection boxes and the proceeds of special events like a party at Clows Top Victory Hall celebrating HM The Queen's 90th Birthday."

ADOPT A PATH

The CMFA has this neat scheme where people adopt a local footpath and keep it clear and accessible. Tools like secateurs can be provided and and it normally means about an hour of your time, between early May and late July.

If you'd like to help, they need more volunteers. More details from susan@eaglelane.co.uk

Do you suffer discomfort from:

- Corns •Callus/Dry skin •Thickened nails
- Verrucas •Athlete's foot •Ingrowing toe nail
- Being unable to cut your own nails

Also provide:

- Complete foothealth check •Medical pedicure
 - Foot massage •Evening and weekend treatment available
 - Free Vascular check of the foot
- 20 years experience**



For professional treatment of foot related problems at my surgery, your workplace or in the comfort of your home

**Contact IRENA
01299 841277
07795 958186**

The Old Farm House, Button Bridge, Kinlet
DY12 3AW •email: hessins@gmail.com
Irena s.a.c.dip.(Dist). f.h.p.p. n.c.f.e. r.f.h.p.



Cleobury Opticians

NHS & private eye tests ♦ FREE children's glasses ♦ FREE NHS glasses
♦ Home visits



Primary Eye-care Assessment
and Referral Service



Opening Times-	
Tuesday	9am-1pm 2pm-5pm
Wednesday	9am-1pm 2pm-5pm
Thursday	9am-1pm 2pm-5pm
Friday	10am-2pm
Saturday	9am-1pm

www.cleoburopticians.co.uk

16 Church Street, Cleobury Mortimer, Kidderminster
DY14 8BX

Tel: **01299 270012**

Email: cleoburopticians@outlook.com

SPAR



National Lottery & Post Office

OPEN:

7am-8pm Mon Thurs

7am-9pm Fri-Sat

8am-8pm Sun

General store, off licence,
newspapers, gas, electric
top-ups, Health Lottery,
bill payments & more.



Telephone: 01299 270236

BODEN & SON DELIVERIES

est. 2013

Delivering fresh Mawley Milk from the farm to your doorstep

Delivering to:

CLEOBURY MORTIMER, CLEE HILL, CLOWSTOP, BAYTON, MAMBLE, ROCK,
FAR FOREST, CALLOW & BEWDLEY.

Also selling many other items

Telephone: **01584 891550**

EMAIL n.bowden30@gmail.com



With Spring well and truly sprung, May is always a month in which South Shropshire looks at its best. Over half the Ludlow Constituency falls within our Area of Outstanding Natural Beauty, and the beautiful scenery makes our county one of the most special in England. It draws in thousands of visitors each year and supports our vital agriculture, providing a real boost to the local economy. So it is very important we encourage and protect the wildlife and countryside of our area.

I have been concerned about an increase in fly tipping. Fly tipping blights the areas in which it occurs, poses risks to environment and human health, and affects the livelihoods of those involved in the legitimate waste management industry. So I have been taking this up with the Environment Agency, Shropshire Council and West Mercia Police, to encourage coordinated efforts between these bodies, and to act before this problem gets worse.

The public can help by remaining vigilant. The Environment Agency investigates larger scale incidents that have the potential to damage human health and the environment: offences committed by organised gangs, those involving more than one load of waste (20 tonnes or more), or where hazardous waste has been dumped. Shropshire Council has responsibility for investigating and clearing up smaller scale fly-tipping on public land. If you see or suspect illegal dumping of waste, you can report it to Shropshire Council on 0345 678 9006, or the Environment Agency's incident hotline on 0800 80 70 60.

I know many local residents share my commitment to preserve and protect our natural

environment, and have received letters and emails from constituents raising concerns about our future environmental policies, as we prepare to leave the European Union. Until we leave the EU, the existing arrangements remain in place. But I am pleased the Government has committed to safeguarding our vibrant natural environment outside of the EU. I particularly welcome that the Treasury has confirmed any structural fund projects, including agri-environment schemes, signed before our departure from the EU will be honoured for their lifetime, even if they run beyond this point.

Leaving the EU does mean however that we can tailor our future environmental policies to the needs of our precious habitats and wildlife, instead of following a one size fits all approach. Ministers are committed to seizing this opportunity as they work on an ambitious 25 Year Plan for the environment.

As a small part of my own commitment to protecting South Shropshire's natural environment, I am pleased to have become the Parliamentary Species Champion for the Wood White butterfly. This was once a much more common sight across England, but is now only found in a few select areas, like Clun Forest. So I hope to help raise awareness of the conservation and protection of this beautiful rare butterfly, and will be visiting sites on the Shropshire/ Herefordshire border next month in the hope of spotting some in flight.

The Government is determined to ensure we are the first generation to leave our environment in a better state than we found it – a view I wholeheartedly share and support.



Electrical & Security

Tel: 07973 112463 (Anytime)

01299 489223



- Full/ Part Installations
- Existing System Updates
- Alarm & Security Systems
- PAT Testing
- Domestic and Commercial Properties
- Electrical Problems
- Landlords & Electrical Safety Certification
- Upgrades
- Free Callouts and Quotes
- For Existing and New Installations and Security.

Part P + Full Scope Registration

Card Payments Accepted



Fast Friendly Service, No Job Too Small

ALLTRADE WINDOWS

UPVC SPECIALISTS

- Windows/Double Glazing Repairs
- Conservatories
- Composite & Upvc Doors
- Bi-Fold & Tri-Fold Doors
- Sliding Patio Doors
- French Double Doors
- Garage Doors
- Fascia Boards & Guttering
- All work guaranteed/30yrs experience

**FREE
QUOTES**



Ring John: 07846460141

**Birthday Parties
Holiday Activity Days**

**Climbing / Abseiling
High Ropes
Raft Building
Zip Wire
Big Bounce
Challenge Course
Indoor Caving
Ask about others**



**Tel: 01299 271217
Enquiries@pioneercentre.org.uk**



Minimum Age 8yrs

**90 minute Session
£11 per person
Minimum 10 people**

**3 hour Session
£20 per person
Minimum 10 people**

**Hire a room for an hour
After your session
To cut the cake etc £15**

T.PREECE TIMBER BUILDINGS LTD

The Old Station Business Park - Bridgnorth Rd - Cleobury Mortimer - DY14 8SY
Custom Built Log Cabins & Timber Framed
Mobile & Permanent Homes

Garden Buildings-Home Offices-Garages-
Glamping & Shepherds Huts



01299 272801 - 07970078336 - www.tptimberbuildings.co.uk

THE COUNCIL HAS MOVED

The Parish Council has moved its office from the Market Hall to Cleobury Country Centre in Love Lane. It gives Clerk to the Council Matt Sheehan more room to work and store records and comes at a lower rent than his previous base. Good sense.

The telephone number remains 271154, the office hours are the same and with the Centre staff dealing with enquiries in the first instance, it means that confidentiality will be more easily achieved.

Probably the biggest plus is the ease of parking, with the area next to the Centre reserved for visitors to that service, the library and the other offices.

NEWS FROM THE LEGION

On April 19th 27 members and guests had a coach outing to Stratford-on-Avon. In perfect Spring weather, they spent the day sampling the delights the town has to offer. They visited many of the Shakespearean sites, from his birthplace to his grave, as well as taking a boat trip along the Avon and soaring above it on the newly installed 'Big Wheel', which will be dismantled and moved to

Leicester later this year. Museum visits included the extraordinary 'MAD Museum' (Mechanical Art & Design) and the Tudor World which occupies one of England's oldest inhabited houses.

Our next outing is to RAF Duxford, an enormous museum and working airfield near Cambridge, on July 20th - note new date. Tickets are £37 each, available from Ron Breakwell (270830) or Mark Baldwin at The Bookshop (270110).

CHRISTIAN AID WEEK, MAY 14 - 20th

Christian Aid Charity has worked for refugees since 1945 and this year's appeal focuses on the plight of today's refugees.

These people are left homeless and desperate and thousands are stranded in camps unable to go back to countries ravaged by violence and unable to go on because of closed borders.

Please help by giving a donation, by envelope in our house to house collection, in the collecting box in St Mary's Church or by going to caid.org.uk/donate

Thank you for giving security and hope to people in great need.

Gabrielle Eve, Cleobury Christian Aid Group

THE CHILDE ENDOWMENT FUND

At the Trustees' request we repeat this appeal for eligible students to come forward:

Students residing in the parishes of Cleobury Mortimer, Neen Sollars, Milson, Coreley, Hopton Wafers, Farlow, Wheathill, Aston Botterill, Stottesdon, Kinlet and Neen Savage are invited by the Trustees to make applications to the above fund for financial assistance to help further their studies.

Details and application forms can be obtained from Lloyds Bank, Cleobury Mortimer, Lacon Childe School or The Reverend Justin Parker, Clerk to the Trustees of the Fund at Adam House, Birmingham Road, Kidderminster DY10 2SA.

The closing date is June 24th

AND ANOTHER REPEAT

This time it's for anyone willing to join the merry cast at the annual Clows Top Pantomime. Rehearsals don't start until September, but the organisers would like to have as many willing bodies as possible to call upon. Call 01299 832229 for further details about taking your first steps onto the stage.

**CLEOBURY COUNTRY
FARMERS MARKET**
IN AND AROUND ST MARY'S CHURCH
SATURDAY 20TH MAY 2017
FROM 9.30AM TO 12.30PM

☎ 07951-329664
01299-271280
01299-271531

P. W. TYRES

Mobile Tyre Fitting Service



WE COME TO YOU AT HOME OR WORK!

Tyre Change & Balance
Puncture Repairs
Batteries
Locking Wheel Nut Removal

Wheels Powder Coated
from £35-00

Rim Bands all colours

*** 7 day service ***

Nitrogen Filling
Experts



Firewood

Seasoned logs, barn dried & ready to burn.

Free local delivery -01584 890993 or 07970878224

Various size loads available



Paul Harding Tree Services



Stewart Mumford Architectural Services Bespoke Architecture

Great value personal service backed up with extensive local knowledge, established links with other construction professionals to ensure comprehensive packages specifically tailored to individual needs.

Initial consultation free of charge.

Specialist in Works to Listed Buildings, Affordable Houses, Open Market Houses, House Extension and Alteration, Barn Conversion and Commercial Projects.



T: 01299 271068
M: 07977 921039

E: office@stewartmumford.co.uk

Posh Potties

Luxury Designer Toilet Hire

A Family run business who specialise in the hire of :

Luxury Mobile Toilet Trailers and Refrigerated Units for outdoor events.

We have all types of Portable Toilets available to hire – from Plastic Portaloos to Large Luxury Toilet Trailers.

We can also provide Refrigerated Trailer Hire

Please visit our website or contact Emma or Chris on 01746 718518 / 07929 314020 for more information.

www.poshpotties.co.uk Oreton, Clebury Mortimer emma@poshpotties.co.uk

GILL CHAPMAN



Gill Chapman carried on living life to the full long after she'd retired from a successful career selling catering equipment. It was the saleswoman in her that could not be changed, and she brought drive and enthusiasm to any task she took on, often together with Reg, making a great team.

When Reg was made Town Crier for Cleobury, Gill as his consort dressed to match and travelled with him, the pair of them winning awards for their appearance. That included one that came their way when they competed in America.

She was treasurer of the Breakfast Club, a committee member of the Friends of Cleobury Mortimer Library, a staunch member of the Parish Church choir and editor of 'Unity', the magazine that represents all the churches within the parish. Only when

her health began to fail did she cut back on her wide range of voluntary work.

The church was full as those who knew her gathered to say their last goodbyes. The choir sang a special piece in her honour and the gathering in the Market Hall was a place to remember all that this loving and much loved woman had done, to celebrate a life lived to the full and not to mourn. She would have approved of that.

The sympathy of all who knew Gill goes to Reg and the rest of the two families brought together by two people who met relatively late in life and forged a new life together.

A POEM FOR MAY

Pauline Ray, a member of the Poetry Club, recently read a piece she wrote some while ago to welcome the month of May. You might like to share it:

Early morning mist in May
Sun rays gleaming through
Catches glimpses of the day
Where lambs skip two by two.

There's a river below with trees
in leaf
And cows in the fields eat new
grass.
Such beauty in these simple
things
Don't rush to quickly pass.

Thrushes and robins visit the
garden

Blackbirds come in many pairs.
Wrens nesting in the hedgerow,
The month to listen for cuckoos
now.

What a joy when those swallows
come,
With soaring skills high in the
sky.

We feel that summer's nearly
with us
And winter is long gone by.

Every day feels fresh this time of
year,
All nature is ready to burst.
Come into the country and see
for yourself
Great beauty that's here on
earth.

SHROPSHIRE KIDS
FESTIVAL

This is happening on May 13th
and 14th and you can get more
information about it on
www.shropshirekidsfest.co.uk.

There a big programme of more
than 150 children's events and
games to enjoy, but after
searching for ten minutes on a
variety of sites (some of them for
the 2016 event!) we cannot find
where it's being held. 01952
432175 offers a very abrupt
message. It sounds like a great
idea, but finding it may be the
first test of the weekend.



LACON CHILDE SCHOOL

the future begins here

Headteacher: Darren Reynolds





Lacon Childe School, Love Lane, Cleobury Mortimer, DY14 8PE

Tel. 01299 270312

email - admin@lacon-childe.org.uk

The May Clarion Social Calendar

Part One

Date	Time	Details	Contact	Telephone
Wed 3 rd	10.00	Walk for Health starts at the Sports Centre, Love Lane.	Alan Kimber	CM 271 754
	8.00	Whist Drive at Doddinton Village Hall	Sonia Pearsall	01584 890 874
Thurs 4 th		COUNTY COUNCIL ELECTION DAY, if you don't vote, don't complain about who you get!		
	7.00	Rock Pathfinders Evening Walk, from Lenchford Inn, Shrawley. PAGE 23		
	7.30	Soroptimists meet at Baxter Church room, Kidderminster		
Fri 5 th		BLACK WHEELIE BINS AND RECLYCLE BOXES EMPTIED TODAY		
	7.30	Promises Auction at Old Lion Inn, Lower Street, for Rupert's Revenge. PAGE 25		
Sat 6 th	8.00am	Sale of household goods, Knowle Sports Centre, Clee Hill	Audrey	01584 890 644
	9.30	Spring Plant Sale, Market Hall, Church Street. PAGE 5		
Sun 7 th	10.00	The Parish Walk starts from the Parish Church. Good social occasion		
	6.00	Open Mic Night at the Kings Arms. Acoustic only, all types of music		
Tues 9 th	7.30	Cleobury W.I. meet at the Market Hall. PAGE 9		
Wed 10 th	10.00	CoCo Coffee Morning, Market Hall. Tea or coffee & cake, just £1.50		
	7.30	Neen Savage W.I. Parish Hall. "Express dinner Parties".		
	8.00	Royal British Legion meets at The Bell Inn, Lower Street.	David Taylor	CM 270 793
Thurs 11 th		GREEN WHEELIE BINS EMPTIED TODAY		
Fri 12 th	9.00	Horticultural Society meet in Talbot Car Park for outing to Malvern Spring Festival		
Sat 13 th	10.00	Plant Sale and Coffee Morning, Victory hall, Clows Top. PAGE 5		
	7.00	Cleobury Concert Brass paly in the Parish Hall PAGE 9		
Sun 14 th	12 noon	Open Garde Trails at Neen Sollars. PAGE 25		
		Christian Aid Week starts today. Please support this compassionate work. PAGE 29		

If you're a newcomer to the area and maybe looking to furnish your new home on a limited budget, the best advice we can offer you is to get up early on the first Saturday of the month and drive up to Clee Hill Village. There you take a left turn towards Tenbury Wells and about a mile and a half down the road you'll see cars parked from 8.00 o'clock or earlier as people head for the monthly Knowle Sports Ground Sale. It's a local institution, organised by Audrey Taylor, and offering a range of goods from furniture to clothing (but not electrical goods) at remarkably low prices. The stuff has all been donated by local people and the profits go to the Sports Club and its grounds, which benefits the local community. At the last count, this group of volunteers with a dynamic leader had raised something over £200,000 for the cause and they don't look like stopping. The best thing you can do is go and see for yourself and be ready to be amazed.



Hobbs Building Services

EST 25Years.

A Total Plastering, Maintenance and Building Service for your home,
business and outbuildings.
Insurance work undertaken

Emergency call out service for general plumbing, roofing, boarding up damaged doors and
windows. For a free quote please call;

Ian on; 07967190742

Email: hobbsbuildingservice@yahoo.co.uk Or Call/Text Kelly on; 07790085307

The May Social Calendar Continued

Part Two

Fri 19 th	8.00	Bingo Night, Doddington Village Hall.	Sonia Pearsall	01584 890 874
Sat 20 th		Coach Outing to Liverpool. Proceeds to charity.	Mrs Gregory	01584 891 464
	9.30	Cleobury Country Farmers Market	Clare Todd	01299 272 300
	10.30	Coffee Morning at Broome Park Farm for Rupert's Revenge. PAGE 25		
	7.30	"Flicks in the Sticks" presents "Allied" a WW11 spy and romance story. PAGE 48		
Sun 21 st		Take Tea with the Midland Air Ambulance at Mercure Hotel, Bewdley. PAGE 5		
		Cleobury Concert Brass play in the Winter Gardens at Malvern. PAGE 9.		
Wed 24 th	10.00	CoCo Coffee Morning, Market Hall. Good company and cake as well.		
	7.30	Clows Top Garden Club, Victory Hall. Nick Poultry on Composting. PAGE 5		
Thurs 25 th		GREEN WHEELIE BINS EMPTIED TODAY		
Fri 26 th	4.00	Children's Disco, Sports and Social Club. PAGE 9		
	8.00	Bingo Night at Doddington Village Hall.	Sonia Pearsall	01584 890 874
Sat 27 th	10.00	Coffee, Cakes and Bakes at Lower Waveney Farm for Rupert's Revenge. PAGE 25		
	7.30	Whalebone's Mirabilia Tour takes them to Farlow and Oretton Village Hall. PAGE 23		
		AND LOOKING FORWARD TO JUNE.....		
Thurs 1 st		Horticultural Society meet in Talbot car park for outing to Coughton Court Gardens		
Fri 2 nd		BLACK WHEELIE BINS AND RECYLCE BOXES EMPTIED TODAY		
Wed 7 th	10.00	Walking for Health starts at the Sports Centre, Love Lane.	Alan Kimber	271 754
	8.00	Whist Drive Doddington Village Hall	Sonia Pearsall	01584 890 874

The CoCo Coffee Mornings have become a favourite fixture in the Social Calendar, still busy even though Walk for Health has moved to the Sports Centre for the summer months, when the winds around that high point in the town are not so merciless.

The CoCo formula is a well-proven one, with the ground floor reception area of the Market Hall open from 10.00, offering tea or coffee and a slice of home made cake for a mere £1.50; some of the baking is so good that people get there early to be sure of getting their favourite before it's sold out. There can't be many voluntary groups whose catering has that high a reputation.

All of this goes with the chance to chat to friends or make new acquaintances as you relax for a while before getting the rest of the shopping done. And you don't have to catch a bus or take the car to get there; it's on the doorstep.

Wild Meadow Boarding Kennels

Give your dog a holiday



- Guaranteed Daily Walks
- Heated & Air Conditioned
- Licensed & Insured

Call Kate & Rich on 01584 890327 or 07967 491428

Opening hours: 8am-11am & 4pm-6pm

Hopton Bank, Cleobury Mortimer, DY14 0QF

HILLS FORD



First choice for all your motoring needs



- NEW FORD CAR AND VAN SALES
- APPROVED USED CAR AND VAN SALES
- ALL MAKES SERVICING AND MOTS
- PARTS AND ACCESSORIES
- CONTRACT HIRE FOR BUSINESS
- CAR AND COMMERCIAL RENTALS
- SELF STORAGE FACILITIES
- MOTABILITY AGENTS

HILLS FORD

169-171 Newtown Road, Malvern WR14 1PJ
01684 212361

Worcester Road, Kidderminster DY10 1JB
01562 549836

BROOKHIRE

Spring Lane South, Malvern WR14 1AT
01684 212428

brookhire.co.uk
hillsford.co.uk

HILLS CONTRACTS

Worcester Road, Kidderminster DY10 1JB
01562 549725

hillscontracts.co.uk
hillselfstore.co.uk

HILLS SELF STORE

Spring Lane South, Malvern WR14 1AT
01684 210530

Worcester Road, Kidderminster DY10 1JB
01562 549716

watch | like | tweet   

HIS & HERS

Dog Grooming Parlour

All breeds and
Cross breeds professionally
Trimmed and Groomed



J. A. Guest

Tel: 07790 796 027

David Ward firewood

Do you need a dependable consistent quality supply of Hardwood and Softwood Firewood? Cut & Split to suit and delivered in breathable 1.2 cubic metre bags so no need to restack. Small delivery vehicle fitted with crane can deliver to most situations. David is happy to discuss your requirements.

Mobile: 07866 441154

email: david@dskw.co.uk

Ever After

- Breakfast club
- After school club
- Holiday club
- "Forest schools" outings
- 15hrs education funding
- 24U funding
- Age ranges: 3 months to 11 years



Day Nursery

Cleobury Mortimer

Please contact us on 01299 272 777

Or Call in to see us anytime.

Friendly, Caring Environment for the Community

Alan Smith Aerials

Digital TV Installations.

Freeview aerials fitted and distributed around the house.

Freesat box, dish, and cable supplied and fitted. One off payment, **No contract or subscription required.**

Extra points, Repairs, New fits, Set ups, Multi room.

All work is carried out by a **Local**, fully qualified and insured installer.

01299 270007 or 07970 675728



Following on from last month's column you will be pleased to hear the reports of dog incidents around Cleobury has greatly reduced. Some words of advice have been issued and hopefully, there will be no more problems. We continue to patrol the area as much as possible; if you see us out and about please say hello. We continue to observe parking around school times but so far there have been no issues to raise.

One of the best tools for tackling crime is the community. This has been working very well in Cleobury recently. Residents have been contacting the Safer Neighbourhood team directly when they observe people or vehicles acting suspiciously. We have then been able to feed this into operations running in the south Shropshire area with some good results. I would like to stress this is not for if you see and crime being committed. Please then use either of the telephone reporting numbers. However if there is something you observe that you feel is just strange or out of the ordinary please get in touch.

Many local residents frequently ask us about speeding through the town centre. This is something which is difficult for us to observe as when police are visible it frequently changes the speed of the traffic. The Safer Roads Partnership however are planning on placing strips down on the road

to monitor the speed over a set period of time.

This will allow them to establish the speed that motorist travel at and any specific times when it is more prevalent. This can then inform any speed reduction or enforcement measures that may be necessary.

As the nights draw out we will be patrolling local hot spots to attempt to prevent anti-social behaviour before it starts. If you feel there is any area where we should be patrolling, please let us know. Cleobury is a very safe town and recent crime figures show this. There were only six incidents reported in February, down from 22 in December. Year on year crime is also down. (Figures obtained from www.police.uk)

We continue to engage with the local Crime Reduction Group, Parish Council and other organisations within Cleobury. If there are any events or meetings you would like us to attend please inform us and we will do our best.

If you wish to get in touch please contact ch.snt@westmercia.pnn.police.uk. If you wish to report a crime please use the 101 service or in emergencies 999

PCSO Liam Jones

INFINITE ELECTRICAL SOLUTIONS

For all your electrical needs:

House rewires

Fuse board upgrades

Electric showers

Need an extra socket or light installed?

No job too small

For a FREE quote

Call Lloyd 01584 811184



More Clarion Smalls



Domestic oil-fired boiler breakdown & maintenance services.
 27 years' field-service experience with leading UK boiler manufacturer Worcester Bosch.
Donovan Taylor
Tel: 01299 828670 or 07807 837040
 donovan.taylor@sky.com
 www.greenstar-boiler-repairs.com
 Caring about your environment and providing an honest, professional & reliable service you can trust



Jet Washing Services

We clean and restore outdoor surfaces at an affordable price.

- Decking
- Patios
- Brickwork
- Driveways
- Fences
- Outdoor furniture

For a free quote call Luke on 07443 039608, or email shropshiredirtblasters@gmail.com

FALCO HEATING

The Solid Fuel Specialists
GARY HARDING - HETAS registered
 Old Hall Farm
 Clows Top
 Worcs. DY14 9HE
T: 01299 832030
M: 07896 685 947
FALCO HEATING@BTINTERNET.COM
WWW.FALCOHEATING.COM



A.B. Plastering
 Plus Traditional Lime Plastering

Adrian Booton
PLASTERER

4 Severne Green, Bayton
 Nr Kidderminster, DY14 9LL

Tel: **01299 832 838**
 Mobile: **07974 582 524**



Soft furnishing and Interior Design Services

Masquerade
 Fabrics Limited

01299 271 680
 36 High Street Cleobury Mortimer near Kidderminster
 Worcestershire DY14 8DQ

Retailers for Sanderson, Harlequin, Monkwell
 Crowson and many more...

Comprehensive design, measuring and fitting service.



Natalie Taylor Dip CFHP MPS Pract.

Specialist Foot Health Practitioner

Specialising in:-

- In-growing toenails
- Fungal infections
- Nail trimming
- Verrucae
- Calluses
- Corns



All from the comfort of your own home.

If you would like to make an appointment, please call on **07779 113982** or **01584 890112**

Hammered 'n' Plastered

Professional Plastering & Carpentry Company
 enquiries@hammerednplastered.co.uk
 07957166364



www.hammerednplastered.co.uk

BEV'S SPRAYTANS

Mobile Spray Tanning Service

Sienna X

Fake Bake

Skinny Tan

For information and appointments

call: Bev 07977 863 799



Still no news yet from Shropshire Council about the result of their Bus Strategy or negotiations regarding a replacement operator for the 2L route. I gather that Shropshire Council have made their position known to Worcs CC regarding the way the contract is run but appear to have had no response as yet. Mind you, if I had taken the mickey for as long as they have, I wouldn't be in any rush to change things either.

The usual run of breakdowns continues, with at least one instance of exploding tyres and regular sightings of broken down vehicles being attended to by support vans. In one case, the driver shared his concerns about the brakes with the passengers and told them that he hoped they would last until their destination. I imagine the passengers felt the same way...

Another first to add to the numerous reasons for failing to complete the route: The early service to Kiddy got as far as Bewdley High School where the bus had to turn round by backing up. Unfortunately, it was at this point that the on board supervisor told the trainee driver that they were using a vehicle with the reverse gear out of action. Cue a wait for a replacement.

Still, at least these setbacks didn't involve collisions. One reader's husband rounded a bend on the Kiddy to Bromsgrove road to be confronted by a Diamond bus on his side of the road... Fortunately, he managed to miss it but the car behind didn't, resulting in considerable damage to both vehicles.

Luckily, no one was hurt but the situation was not helped by the fact that the bus driver appeared to hail from a long way east of Kidderminster and spoke little English. Perhaps he had drifted off for a minute and thought he was still at home.

I have just seen a story about a 12 year old boy from Sydney who took a car and attempted to drive it right across Australia. He got 800 miles before being stopped which is good going so I wonder whether he might get offered a job as a Diamond Bus driver as this is further than any of their current staff have ever managed... As ever, there is always someone worse off somewhere. In the Northern Phillipines, a bus plunged into a ravine killing 24 of those on board. The accident was blamed on brake failure due to poor maintenance and lax transport law enforcement. Does this sound familiar?

Passengers on the 9.14 to Kiddy are still being charged £1 despite assertions from Shropshire Council that this is not justified and promises (dating back to 2013!) to sort the situation out.

I am told that some suspicious individuals have expressed the opinion that the exclusive scoop on the new Diamond bus trial in last months 'Clarion' was not entirely accurate. Oh ye of little faith! Obviously radical advances like this take time to be developed and, all being well, further information will be published when received, although it may not be until next April or thereabouts.

Al Pass Driving School

You never forget the day you

Pass your driving test

Introductory lesson free!

Your local driving Instructor 0789 67 41041

More Clarion Smalls

Health Professional
Registered Chiropodist



Janet Manley

MSSCh., MBChA
BSYA(reflex) Reiki Master

Specialist in Reflexology & Reiki Healing

Cleobury Mortimer based 01299 272841
Home visits 15 mile radius 07805 268439

D Painter - Painting and Decorating

Your local friendly Painter and Decorator.

Ex British Forces professional,
hard working and reliable.

Free quotes, reasonable rates,
no job too small.

Please call Darrell:

**01299 271838 or
07854 770 604**

Terence Montague

Interior and Exterior
Painter and Decorator



Stottesdon
01746 718 742
07787 124 304

Washing Machine
Repairs and Sales

JULIAN BREAKWELL

Telephone 07791 633 746

Repairs to all makes, including
Bosch, Hoover, Zanussi and
Hotpoint

**NO CALL OUT CHARGE
FIXED LABOUR COST**

SIMON CARTER

**PROFESSIONAL PAINTER AND
DECORATOR**

*PLASTERING, TILING, COVING AND
GLAZING*

5 LOVE LANE, CLEOBURY MORTIMER

TEL: 01299 272868

MOBILE: 07815 483 029

KNOWLE SPORTS SALES

Tenbury Road, Clee Hill.

8.00 to 11.00am

*The First Saturday of
Every Month*

STILL WANTED: Good clean donations.

Collections: 01584 891249

Enquiries: 01584 890644

Seasoned Oak Logs For Sale

Free Local Delivery

Also Mixed and Softwood Available

Tel: 07976 895 267

01584 890 795

K Phillips & Son Groundwork

E: kphillipsandson@yahoo.co.uk

Piano tutor

Francis Engleheart

School-aged or adult
students, beginner or
advanced. Based in Kinlet,
but I can come to you.
Some day and after-school
spaces available.

07710 288526 • fengleheart@hotmail.com



A mystery picture. This was sent in by Mary Swift of Mable, who is trying to trace who the people are and where and when the picture was taken. Mary identifies Bette Rascal second from right in the back row, but nobody else. Bette worked at Mullers for some years, so could it be one of their social occasions? All clues welcome - send them to the editor or talk to Mary Swift herself on 01299 832476. Whatever the occasion was, it was clearly a very happy one with all those smiling faces.

JUST A THOUGHT...

"We have heard that one million monkeys with one million keyboards could probably produce the entire works of Shakespeare. Now, with the invention of the internet, we know this is not true."

Anon.

HAPPENINGS AT THE HALL

Kinlet Hall has a busy summer season approaching, beginning with an Open Day on the Bank Holiday of May 29th. There's a chance to look around this fine ancient place, home to Moffats School since 1946, and to see the house, stables, gardens and

grounds; all of this plus fun for the family. Open 11.00 until 4.00 and all proceeds go to the Midland Air Ambulance. Entry is free.

On June 9th there's a full programme, with Moffats' School's Open Day running from 9.30 until 12.30 and in the evening the Chapter 8 vocal ensemble entertain from 7.30. Tickets cost £12 for adults, £10 concessions and £6 children. Book yours on 01299 841230.

And finally in this brief preview, an old favourite will be back on Sunday July 2nd. It's the Rain or Shine Theatre Company with their production of 'Twelfth Night'. The gates

will open at 1.00 for picnickers to take up their places and relax before the production itself begins at 3.00. Might we suggest an early morning visit to church and a prayer for fine weather?

Tickers available from 01299 841230; adults £13, concessions £11 and children £6.

It is good to see such a special place as Kinlet Hall open to the public on so many occasions. It sits in a fold in the rolling Shropshire countryside that rewards a visit at any time of the year and its use for so many community events is something we should all thank the Engleheart family for. A lovely place.

A FLORAL SYMPHONY

Church Flower Festival

16th - 19th June. 11.00am to 5.00pm

St John the Baptist, Mamble (off A456)

Refreshments, local art and plant sales.

Open Gardens Saturday and Sunday

£5.00 admission (Under 16s Free)

Information: 01299 832796 or 823793

Help At Home is a service offered throughout Shropshire by Age UK to Over 50s. People often need help to remain independent with a good quality of life.

We offer help with shopping, walking dogs or light domestic jobs around your home, including laundry, ironing and gardening. After an initial visit to discuss the help you require and the cost, we offer a trained support worker who will start visits on a regular basis.

To discuss your need with a member of our staff, just call **01743 233788**

DOMESTIC GODDESS HOME SERVICES

*I will tackle any job with care and pride!
I specialise in general household chores and
de-cluttering of homes.*

I am very reliable.

CRB checked - References available

*Contact Julia anytime on
07867646574/01299 832297*

ALAN PRICE DIRECT TRAVEL

PRIVATE
HIRE
TRAVEL

AIRPORT
TRANSFERS

LOCAL &
LONG
DISTANCE,



COURIER
SERVICE

FRIENDLY &
RELIABLE

FULLY
COUNCIL
LICENSED

Tel: **01584 890014**
MOBILE: **0773 3079679**

M D Taylor

Kitchens/Bathrooms

Fully Fitted

Including all electrical,
plumbing and tiling.

Call David on 01299 832903
or 07973 848618

E.PURSLOW & SON LTD

Stone, Gravel, Cement Supplies

Approved Coal Merchant

Calor Gas Stockists

Tarmacadam Specialists

Car Parks and Driveways

Constructed.

TEL: **01299 270314**

t. 01299 823 986
m. 07467 946 087

www.rewyreelectrical.co.uk

@rewyreelec

ReWYRE
electrical

- EMERGENCY CALL OUT SERVICE
- ALL ELECTRICAL SERVICES OFFERED
- FREE NO OBLIGATION QUOTE

We are fully accredited and supported by:

Domestic & Commercial Electrical Services

Cleobury Mortimer Horticultural Society

SPRING PLANT SALE

Saturday 6th May. 9.30 to 11.30am

In the Market Hall, Church Street

Computer and Laptop

Repairs.

No fix No fee

CCTV & Access Control

Jenpac ICT Solutions

01746 860297

www.jenpac.co.uk

Established 2005

Electrician

Indoor/Outdoor Lighting Specialist
Repairs and Installations

No Job Too Small, Reasonable Rates

For an Honest and Friendly Service Please Call Mathew

Part P

Approved

Tel: **01584 711553**

Mob: **07974 638045**



May in the Wyre Forest

Linda Iles

I have just put out of the window a little red beetle. A Welsh Oak Longhorn and rare enough to be listed in the Red Data Book (an inventory of threatened species started by the International Union for the Conservation of Nature in 1964). However, they emerge in numbers from oak logs brought in to the house for our fires in the spring and can also be seen in the woodpile outside in May, so they're not rare at Unclyls Farm, nor I suspect at many other locations nearby.

It reminds me of our colony of white orchids (the Narrow-leaved Helleborine) at St George's Farm two years ago. The farm was empty and we were measuring up for some new fencing when I saw some interesting plants coming into leaf in the field corner. Our excitement was in equal proportion to the nonchalance of the family who used to live there: they knew that the orchids came up in that spot every year. It all depends on who knows and is regarded as the authority on the subject. My point is that the one who goes into print may not know as much as the 'proper country folk' who've lived alongside such things but don't record their knowledge. Recording is terribly important, and Rosemary Winnall's 20-year study of the plant in the Wyre Forest has amassed a body of information which can be used to show its true status (in terms of numbers) and alert landowners to give them protection when work such as thinning or track maintenance is carried out. You can read the ups and downs in the recent history of this orchid on the Wyre Forest Study Group's website, and perhaps you'll be lucky enough to see a few spikes of its creamy-

white flowers on a forest walk. My thanks to Mick Farmer for his photo of this lovely plant.

This month you should also look out for the delightfully-scented and shaped flowers of Lily of the Valley. It is only since moving to live at Unclyls Farm that I've realised this is a native wild flower. It grows in woods but appears to favour path and track edges where there is plenty of light but little competition from other vegetation; this makes it vulnerable to damage from traffic. I was much relieved when my attempts to protect a colony along Tanners Hill were noticed by the driver of a transporter taking timber from a recent thinning operation and the plants survived, unsquashed, to grace the track-side again this year.

Linda Iles



The Narrow-leaved Helleborine. Photo: Mick Farmer



We control:

Insects Rodents
Mammals Birds
Electronic fly killers
supplied & fitted

Mobile: 07890 048 362

**WYRE FOREST
PEST
CONTROL
AND
WILDLIFE
MANAGEMENT**



All work guaranteed
No call out charge
Discount for O.A.P's
Free survey and quotation

Office: 01562 747 210

www.wyreforestpestcontrol.co.uk

Cleobury Mortimer Golf Club

The 3 Month Taster Membership

Enjoy the benefits of 7 day membership with our Special 3 Month Taster Package for just £150

45min Lesson with Amy Millward
or David Pain Included.

The 3 Month Membership is for April, May and June

Terms and Conditions apply.

Voted the most picturesque golf course in Shropshire
(Midlands Golf Magazine 2017)



Contact Dave or Tom on 01299 271 112 or
email pro@cleoburygolfclub.com

WiRE
Women in Rural Enterprise

**Calling all business women living in the West
Worcestershire / Wyre Forest area.**

Join our friendly group to network with like-minded business
women.

Improve your skills, boost your confidence and get new business.

For more information, contact Steph :
☎ 07895 623048
Facebook: @wyrewirenetworking

We meet at the **Faded to Fabulous**
Tea Rooms in Kidderminster
10am-12pm
on 2nd Thursday each month.

Join us for support, advice, great
coffee and a chat.

Kim Stanley

HEALTH & BEAUTY

0 1 2 9 9 2 7 1 8 0 0

Spraytan Non-Surgical Facelift Electrolysis Aromatherapy Waxing Reflexology
Gel Polish Spa Find Facials Jessica Nail Care Hot Stone Therapy Hopi Ear Candling

Enquire instore for full range of treatments available.

Kim Stanley
IHBC - BABTAC

30 . High St . Cleobury

REIKI

**Feeling Anxious, Stressed or Low ?
Reiki Soothes, Relaxes and Comforts.**

www.katejones-reiki.co.uk

Tel. 01584 890284

30 High St

Kate Jones

* Over 20 years experience in Reiki (Reiki Master)

PHYSIO

**Chartered Physiotherapist, Emmett
Practitioner, Acupuncturist** (pain relief),
Pain, Stiffness, Musculoskeletal Problems,
Injury, Neurological Conditions, Lymphatic
Drainage, Sinus Congestion.

Tel. 07905 766729

30 High St

Jill Sharp

SRP, MCSP, BSc(Hons)

Amanda Horton Mobile Computer Services

Tel: 01746 861612

Email: mandhorton@gmail.com

Text: 0796 461 4185

OVERWHELMED BY TECHNOLOGY AND DON'T KNOW WHERE TO START?



- Email
- Social Media
- Researching family history
- Online Shopping

I offer computer lessons and services in the comfort of your home and can walk you through at a pace that suits you

Reasonable hourly rates

CHARTERED BUILDING SURVEYOR

Paul Rosevere MRICS, BSc (Hons)

- FULL DESIGN SERVICE FOR BOTH DOMESTIC AND COMMERCIAL PROPERTIES
- NEW BUILD, EXTENSION AND ADAPTATIONS, LISTED BUILDINGS
- DRAWINGS, PLANNING PERMISSION AND BUILDING REGULATIONS
- TENDERING, PROJECT MANAGEMENT, CONTRACT ADMINISTRATION
- CONDITION SURVEYS, FAULT DIAGNOSIS, SCHEDULES OF WORK



**WE OFFER A PROFESSIONAL, LOCAL SERVICE.
FOR FREE INITIAL ADVICE AND GUIDANCE CONTACT PAUL.
Mob. 07882 804 229, Tel. 01299 270777**



EOS Contracting

EOS are pleased to announce that we are now able to offer our professional tree services for domestic and commercial customers

Tree works undertaken include, but are not limited to:

Reductions—Dismantling—Pruning—Planting—Stump Grinding— Tree Surveys

Please feel free to contact us to discuss your requirements

TEL : 01531 650012 / 07772 751536

Email: office@eoscontracting.co.uk

PROUD SPONSORS OF THE CLEOBURY MORTIMER RUGBY CLUB



Luxury for your cat, peace of mind for you

- Vaccinated cats only
- “cuddle time” spent with every cat, every day
- Individual likes & dislikes catered for
- Inspection invited
- The cattery of “First Choice”
- Tranquil environment
- Family units for cats from the same home
- Protected by security system
- Full height sneeze barriers
- Spacious, heated chalets
- Bright & airy
- Completely protected from the weather
- Spotlessly clean

Catsley View, Meaton Lane, Kinlet, DY12 3DD, call 01299 841 270

Registered Osteopath.

Experienced with a wide range of injuries & medical conditions including :-

- | | | |
|--------------------------------|-----------------------------------|---------------------------------|
| • General aches and pains | • Headaches arising from the neck | • Fibromyalgia |
| • Joint pains | • Circulatory problems | • Sports injuries |
| • Arthritic and rheumatic pain | • Lumbago | • Muscle tension and imbalances |
| • General back and neck ache | • Sciatica | |
| | • Neuralgia | |



James works alongside Sue Brown at Cleobury Chiropractic in the High Street.

If you would like an early-morning or evening appointment then please call James on: 07506 287191.



An idea introduced to the library by the Friends is the Local Authors Shelf, where any book written by such a person can be left for readers to borrow and maybe decide to buy their own copy. We should explain that the library do not sell these books, they are there to make visitors aware of local literary talent.

The latest title to join the collection is Edwin Sayers' new work "The Coracle Boy and the Pagan Gold" which he recently handed over to Sam Adams. It will be available later this month, as such gifts have to be registered and the work approved before it's put out to the reading public. Just a simple piece of accurate stock-keeping and a sensible precaution for a place where children are encouraged to browse and explore.



Edwin Sayers handing over his latest work to Sam Adams for the Local Authors display.

Book Review: "The Coracle Boy and the Pagan Gold" by Edwin T Sayers.

This is the second volume in Edwin Sayers' 'Coracle Boy' trilogy of adventure stories for younger readers. Set in an unnamed land far away, it tells about the adventures of 14 year old Harry, a lad with a talent as a coracle builder and pilot.

In this book Harry and his younger sister Meg go in search for their infant sister Ruth, kidnapped by pagan robbers to

work as slaves in a gold mine or to be sold to work in a rich man's household. The children are orphaned after their father was killed by robbers and Harry takes on the mantle of leader as he and Meg follow the robbers in mountain country. Behind them their villagers are also in pursuit, as many children were taken, but it is Harry and Meg who travel swiftly upriver and use the cunning and skills Harry has learned from his dad and friend Pete.

The children suffer extreme cold in their chase, survive an earthquake that wipes out part of the old mine and puts the kidnapped children in greater peril before Harry joins with soldiers and villagers from his home to outwit the wicked Pagan Priest and his cruel gang to bring the children back to their families. The excitement keeps on coming until right triumphs and they return to their adopted village as heroes.

A rattling good yarn, which I would have read to my sons in their youth and kept their attention withers ever changing scene. Good value at £8.99, available from Edwin at CM 270439.

Mark Pearce

Landscape, Design and Rustic Garden Furniture

- Fencing
- Patios
- Drives
- Decking
- Garden Sheds
- Summer Houses
- Fence Panels
- Log Stores



And Much More

Top Quality Fully Treated Timber Products

Mobile: 07875425028

Tel: 01746718404

KINLET C OF E PRIMARY SCHOOL

Preparing for the future in a caring
Environment



- Large field and playground
- Caring Ethos
- Broad and balanced curriculum
- Breakfast and Afterschool Clubs

www.kinlet.shropshire.sch.uk
admin@kinlet.shropshire.sch.uk
Telephone: 01299 841210



NO TIME TO DO YOUR IRONING?
SICK OF THE HASSLE OF YOUR LAUNDRY?
LET ME, **THE IRON LADY**, JEAN BASHAM
TAKE AWAY THE STRESS AND DO IT FOR YOU!
A FULL LAUNDRY AND IRONING SERVICE
ESTABLISHED FOR 15 YEARS
THE **LOWEST RATES AND BEST SERVICE** AROUND!
CALL 01299 271 546 OR 07792 813 774
EMAIL JEANTHEIRONLADY@GMAIL.COM
"FROM CREASED AND MESSED TO CLEAN AND PRESSED"

M D Taylor
Electrician/Plumber
No job too small or too large
NICEIC Registered
Call David on 01299 832903
or 07973 848618

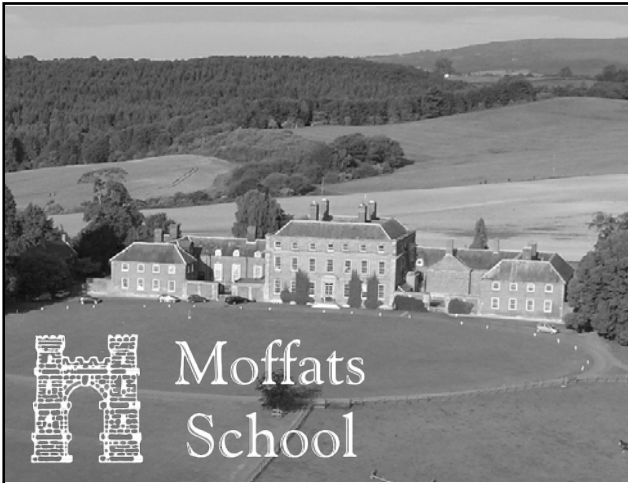
Lower St Garage

7 Lower St, Cleobury Mortimer. DY14 8AA



- M.O.Ts on cars, motor bikes & small commercial vehicles
- Tyres, Tyre fitting,
- Puncture repair and Tracking.
- Diagnostics, Air conditioning
- Welding.
- Service and Repairs to most vehicles.
- Delivery and Collection Service Available

Contact The Team at Lower St Garage on: 01299 270208



Thinking about your child's education?

Moffats, your local prep school, welcomes children from the ages of 3-13.

A happy family school in an exceptional setting.

Extras include riding in our 100-acre grounds.

Funded Kindergarten places: ages 3 & 4.

moffats.co.uk • 01299 841230

Kinlet Hall • DY12 3AY

On the B4363, 5 minutes from Cleobury Mortimer

freshen up your living space...



WE GLEAM

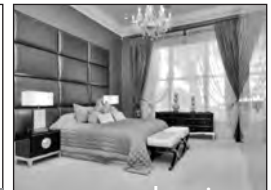
professional cleaners & re-upholsterers
we don't just clean it...we gleam it!

we welcome all enquiries 07961 712 683

www.wegleam.co.uk email weggleam4u@gmail.com



re-upholstery



carpet cleaning



upholstery cleaning

Call in the experts.
We Gleam has 21 years experience & 100s of satisfied customers.



**Michael Coombes
Roofing & Building Maintenance.**

Complete Re-roofing, Roof repairs, Pointing & Chimney repairs.
Slabbing & Brick work
Wall & Floor Tiling
Painting & Decorating

Over 20 Years experience in the Cleobury area.

Call Michael on 07854 047413

Take the worry out of organising that special event...



Have your own, homemade, afternoon tea delivered and set up for you in a venue of your choice. Served on fashionable vintage china with tiered cake stands, complete with bunting, flowers, napkins and tablecloths, so that you can relax and enjoy your event.

Contact us to discuss your individual requirements for:
Afternoon Tea Parties, Weddings, Baby Showers, Christenings,
Birthdays, Anniversaries etc...



Mobile: Tracy & Nick Price- 07515 644865 | Facebook: Vintage Delight |Email: vintagedelight@outlook.com

CLEOBURY MORTIMER PARISH HALL

**‘Flicks in the Sticks’ Saturday May 20th
presents “Allied” starring Brad Pitt and Marion
Cotillard in an acclaimed WWII spy and
romance story.**

**7.30pm start, licensed bar, friendly atmosphere.
No parking problems - you can walk here.
You won’t believe how reasonable the prices are.**

TO BOOK YOUR EVENT AT THE HALL CONTACT JAN ON 01299 271070

**Your Parish Hall - the Town’s
Best Value Venue.**



Valley Property Managers

your personal letting agents

01299271430 | 07751769315 | info@valleypropertymanagers.com | www.valleypropertymanagers.com

**Are you looking to rent your property with a letting agent who will truly look
after your investment?**

Being a family run business means we have the **time** and **energy** to dedicate to each of our clients. Our aim at Valley Property Managers is to offer each of our clients a personal and tailored service. Not only will we look after your investment as if it were our own, we also aim to deliver top quality service at the lowest prices.

SPRING OFFER

We are now offering 8% commission (usually 10%) for the first six months of any new agency agreement. We are also only charging £50.00 (usually £195.00) in initial fees to start an agency agreement with us.

Plus, there is NO VAT TO PAY on any of our fees! Get in touch to arrange your free, no obligation market appraisal.

01299271430 | 07751769315 | info@valleypropertymanagers.com | www.valleypropertymanagers.com

Paul French adds to his stories about local men in the 1914 -18 Great War, with a look at others who were sacrificed in the conflict.

How horses were used in WW1 marked a turning point in armed conflict. Cavalry units were considered essential at the beginning but their vulnerability to modern armaments and the static nature of trench warfare reduced their usefulness on the Western Front.

They had more success in the Middle East however. Soon horses were used in logistics, better in deep mud and rough ground than motor vehicles, they carried messengers, pulled artillery pieces, ambulances, supply wagons and were used for reconnaissance.

It is worth remembering that in 1914 Europe had a very labour intensive agricultural economy powered by man and the horse. On both sides there would have been many serving soldiers used to working with horses at home, so they often ended serving with them.

Horses shared the same conditions as men. Though better in mud than lorries and more effective, they still got stuck. A comment from a Canadian serving at Vimy Ridge explains that

“the horses were up their bellies in mud, we would put them on a picket line at night and they would be sunk in over their fetlocks by morning. We had to shoot quite a few”

The horse was considered by 1917 to be more valuable than men, at Passchendale 1917 it was understood that

“ at this stage to lose a horse was worse than losing a man because after all, men were replaceable ,horses were not”

Conditions were severe for horses as well as for men. They were killed by ordinance,, drowned, died from skin infections and disabled by poison gas. Army vets treated 725,000 horses over the course of the war and saved in excess of 520,000.

Enough about numbers, just think about other considerations in using horses. At

times as close as possible to total silence would be required in an operation. So how about all that harness clanking on movement and those heavy hooves hitting the ground?

At the Battle of Cambrai horses were required to recover guns captured by the British from no mans land. In one instance two teams comprised of sixteen horses each had their harness , hooves and pulling chains tightly wrapped to reduce noise. Returning the guns to British lines required teams and drivers to cross trenches and wait calmly for the German barrage to end on the road they needed to use.

Huge bonds are often forged between humans and horses, they rely and depend on each other. Horses become your “mate” your “pal” next to you in the trench and you go over the top together. When the mate is no longer there you miss them and feel great sadness.

The contribution and importance of the horse in the conflict and to the people who depended on them perhaps is best summed up in the last two verses of Henry Chappels poem “A Soldiers Kiss”

Only a dying horse! he swiftly kneels,
Lifts the limp head and hears the shivering sigh,
Kisses his friend while down his cheek there steals,
Sweet pity's tear, “Goodbye old man,
Goodbye.”

No honours wait him, medal badge or star,
Though scarce could war a kindlier deed unfold,
He bears within his breast, more precious far
Beyond the gift of kings ,a heart of gold.

Paul French

HOSKINS

FAMILY FUNERAL SERVICES
& STONEMASONS

Making a difficult time easier

FUNERALS: 01299 879090 STONEMASONS: 07718900151

STOURPORT ON SEVERN - FUNERAL HOME WITH CHAPEL OF REST
107, THE BIRCHES, STOURPORT ON SEVERN, WORCESTERSHIRE, DY13 9NR

1ST FLOOR, THE MARKET HALL,
CHURCH STREET, CLEOBURY MORTIMER, DY14 8EX

TRADITIONAL
BESPOKE INC HORSEDRAWN
GREEN FUNERALS

AVAILABLE 24 HOURS

LICENCED MEMBER OF THE
BRITISH INSTITUTE
OF FUNERAL DIRECTORS

PROVIDING THE VERY BEST OF CARE



NEW MEMORIALS
ADDED INSCRIPTIONS
CLEANING & RESTORATION
GRANITE VASES
GRANITE HOUSE SIGNS
LASER ETCHED PHOTOS
OR IMAGES
QUALIFIED STONEMASONS

WWW.HOSKINSFUNERALS.CO.UK

 HOSKINS FAMILY FUNERALS



The Lamp Restaurant

15a High Street, Cleobury Mortimer, Shropshire, DY14 8DG

01299 272785 or 01299 271315

Fully Licenced and Air Conditioned

Serving Bangladeshi & Indian Cuisine



The Lamp Restaurant winner of Currylife award chef of the Year

Open 7 days a week from 6.00pm until 11.00pm

The Lamp's cuisine, inspired by Sylhet, the second city of Bangladesh, offers a wide variety of choice along with established favourite dishes and a selection of Chef's Specials.

The wide variety of starters and accompaniments chosen by our chef to complement your main course.

Takeaway service offers free delivery up to 3 miles for orders over £15.00.

Find us on Facebook: Lamp Inn Cleobury Mortimer

Newbridge Computer Services Tel: 01299 270701

- ★ Want a new computer?
- ★ How to set it up?
- ★ Worried about what you need?
- ★ How to transfer your data?

Well help is at hand!

We offer a complete service package with all our new computers to ensure you get exactly the right system, at the right price and completely hassle free from start to finish.

Buying a computer system from us couldn't be easier!

Also:

Spares & Repairs
Internet Connection
Security: Anti-virus etc.

E-mail mike@ncs-tech.co.uk

Suppliers of  Computers

And:

Call out & onsite Repairs
Accessories
Wired & Wireless Networks

website: www.ncs-tech.co.uk



07971 361901 or 01299 832484

**Complete Bathroom Installations
Bathroom Refurbishment or Repairs
Wet Rooms
Professional Wall and Floor Tiling**



For a quality and guaranteed service, call Stuart for a free quote
Highly Recommended / References available - see my reviews on www.freeindex.co.uk

FOR THE BATHROOM YOU DESERVE!

Boomerang

of Cleobury Mortimer

private hire travel

- Friendly, reliable service
- Local & long distances
- Fully council licensed (up to 12 passengers)
- Airport transfers
- Courier service
- All occasions catered for

Tel: 01299 271257, Mob: 07411 142755, Email: stuart.boomerang@yahoo.co.uk



Registered
Technician

30546

JOHN VAIL

Plumbing, heating and bathrooms
Installation of boilers, cookers and gas fires
In homes, park homes and caravans
Boiler servicing and landlords' certificates

GAS LPG OIL

Gas Safe and OFTEC registered

07971 624804

01584 890946

johnvail123@btinternet.com



536724

Tiny Stots
Informal parent
and toddler group
Fridays (term time)
10am-noon

Chorley Family Playgroup

Located
next to
Stottesdon
School



...shaping the future

Highly-qualified staff providing Early Years Foundation Stage learning in a happy, safe and stimulating playgroup with a beautiful garden and outdoor play area.

Ofsted
'GOOD'
report



Open
Mon-Fri
8am-5.30pm
(term time)
Competitive fees
Vouchers accepted
Holiday care available

Extra-curricular
activities including
yoga, dance,
craft projects, trips and
gardening to support
your child's learning
through play.

Community orientated
with strong links to
local schools.
15 hours per week
of funding available
for children over 3.

01746 718769 www.chorleyfamilyplaygroup.co.uk

Ofsted Reg. No. EY369688
Charity No. 1018755



Vehicle sales & valeting

DOES THE CAR NEED A SPRUCE
FOR THE WINTER?

GIVE ASHLEY A CALL FOR A QUOTE

FULL OR PART VALETS TO YOUR BUDGET
(BOOKING ESSENTIAL)

Tel: 01299 271365

Mobile: 07710 913401

Guitar Tuition

- ◆ Experienced tutor based in Stottesdon.
- ◆ Teaching for 20 years privately and in schools.
 - ◆ One to one or shared lessons.
- ◆ Member of the Registry of Guitar Tutors and Musicians Union.
- ◆ All ages, styles and abilities welcome.
- ◆ DBS checked, full liabilities insurance.

Contact: MARK.CHECKLEY@sky.com

01746 718636 - 07708 386433

Carolyn & Keith Balmer support a number of people who are involved in charitable activities. So we are always looking for soft toys and teddies for the "Teddy Trust". www.teddytrust.org.uk .

Also if possible new, or very good quality, pens, pencils, note books, school bits and pieces, anything that would be useful for deprived children.

Phone 07944234636



Nigel Hodgson MA Env. Man. DMS
Energy and Environment Consultant

Telephone: 07452 921 499

Email: nig.solutions@btinternet.com

Environmental cost, consumption & carbon reduction

Over 30 years' experience in energy/environmental management for small, medium and large organisations to reduce cost and increase profits.

Create your
own Original


CHARLTON
INTERIORS

Local Upholstery/Furniture Restoration

Call for a free estimate to restore your furniture
or view the Website www.charltoninteriors.com
to see a range of quality antiques restored and
awaiting your choice of top cover.

Tel: 01746 718285 or 07837609229
email info@charltoninteriors.com



MARCHES
PEST CONTROL

Pest control and wildlife management
Domestic - Commercial - Agricultural

Geoff Jordan

BPCA Qualified for all insects, rodents and wildlife

Mobile: 07971 866564

Email: info@marchespestcontrol.co.uk

Web: www.marchespestcontrol.co.uk

We cover: Cleobury Mortimer, Ludlow, Tenbury Wells, Leominster, Kidderminster, Bewdley, Bridgnorth, Worcester and surrounding areas

For all of your picture framing needs, visit

Cross House Arts
Picture Framing Gallery, Mable

Ring George or
Dean anytime
01299 832616

incorporating

**Frames By
Design Ltd**

Cross House, Mable, Worcs. DY14 9JL
01299 832616 (opposite the Sun & Slipper pub)
www.pictureframes-uk.com
Open Wed. to Sat. 10:00am—5:00pm

fairway

Accountants & Business Advisers

Proactive professional team available 7 days a week. Highly competitive fees.

Contact: Simon Hector 07896 439594 or Simon Connolly 07973 360456

Offices in Cleobury Mortimer & Stourport on Severn

Main Tel: 01299 822283 Email: team@fairway-net.co.uk
www.fairway-net.co.uk

Tranquillity Travel

INDEPENDENT TRAVEL CONSULTANTS
EST 2003

Summer/Winter Sun Holidays
Cruises
Ski Holidays
Weddings and Honeymoons
City Breaks
Tailor-made Holidays
Flight Only
Theatre Trips
Heritage Day Trips

Come in, WE'RE
OPEN



01299 400130

www.tranquillity-travel.co.uk

within the Mercure Hotel, Bewdley (free parking)
Find us on Facebook @TranquillityTravel

Fully ABTA/ATOL Bonded
First Class service from booking to return
24 hour emergency phone number
Experienced, well trained staff

Hands on Printing

Print your own photographs on our SNAP LAB PRINTER
or we can do it for you.

All Digital formats disc- cards or phones

Print sizes 6 x 4 5 x 7 8 x 6

Enlargements from 10 x 8 to 36 x 24 inches

Canvas prints from 16x12 to 20 x 30 inches

Prints from 35mm slides - Celebration Banners - Paper or Plastic

Colour Business Cards - Flyers - Raffle Tickets B-W or Colour copying

Most video tapes transferred to D.V.D.

Audio tapes and records to C.D.

Cine films to D.V.D.

Pass ports - Bus pass - Driving licence photos etc.

A selection of Photo Frames now available

43, High street, Cleobury Mortimer. DY14 8DQ Tele:- 01299-272757

Paul Harding



Tree Services

- Tree surgery and felling
 - Woodland thinning & maintenance
 - Hedge trimming & grass cutting
 - Supplier of hardwood logs, kindling and garden bark
 - NPTC certified fully insured. Domestic and commercial work undertaken.
- Tel 01584 890 993 Mob 07970 878 224

Ian and Debby Luxton are highly qualified professionals with their feet firmly on the ground. They don't talk above your head to show off their knowledge, preferring to give solid, common sense advice that anyone can understand.

They came from a business background, Ian once the managing director of a business information company who sold out and trained as an osteopath at the College of Osteopathy.. The fact that his mother was in health care suggests an inherited wish to help people.

It was no easy ride. In addition to studying years of clinical medicine, the course required 1,000 hours of hands-on practical experience, followed by the need to keep his skills up to date every year. That's what the General Osteopathy Council demands if you are a member; if you're not a member you may not claim to be qualified.

Debby is a podiatrist and took a similar path, moving out of education to take on a three year university course. That covered theory and practise, plus NHS placements at a variety of locations. "I'm trained to diagnose and treat problems of the foot and lower

limb," she explains. "I'm a foot specialist."



Ian and Debby Luxton, two professionals with a down-to-earth approach. The smiles come as part of the service.

They moved from Oxfordshire to Shropshire after a patient made a similar move and got them thinking about changing to a less pressured way of life. "We rented a cottage in Tenbury Wells for a week and took a look around," Ian recalls. "From deciding we wanted to live here to moving in took three months." A room was adapted as a treatment centre, the signs went up outside their home in Middleton and they were in business. Dithering and hesitation is not part of this team's thinking.

Ian sees people with a wide range of problems, but few of them like the 92 year old who told him: "I walk a lot, but I've lost the spring in my step. Can you help me get it back?" How could we get that remarkable attitude? "You've got to fight back, get fit to live. Muscular weakness is common, almost a way of life. People lack exercise."

Debby has a similar approach: "If you've got painful feet, change your footwear. If shoes aren't comfortable in the shop, don't buy them! Buy in the afternoon, because your feet swell during the day, and go for flexible fasteners."

They're both great believers in orthotic shoe inserts that help posture by aligning the feet and the rest of the physique. And Ian has a definite view on doom mongers: "People who say nothing can be done only say that because they can't do it. It's not true, there is always something that can be done."

Debby agrees: "You've got to know when to refer people on to someone with greater specialist knowledge."

It's that honest approach that shines through when you talk to them. Two people happy to help or guide you to better health.

PODIATRY/CHIROPODY

Debby Luxton. HCPC Registered

**Treating and Caring for Feet
General and Specialised
(Verruca and Fungal Nail)**

www.ludlowpodiatrist.co.uk



OSTEOPATHY

Ian Luxton. GOSC Registered

**Treating Pain and Injury
Acute and Chronic
Head to Toe**

www.ludlowosteopath.co.uk

We are both highly qualified, very experienced and absolutely dedicated to providing our patients with the best quality care in our respective disciplines.

We have many testimonials from patients, some are on our websites and a couple to the right.

Middleton | Ludlow | SY8 3EF

T: 01584 823331

"I'm now free of discomfort due to the excellent and wholly appropriate treatment you have given me."

"We have greatly appreciated your attention and trusted your advice."

MAWLEY OAK TRAVEL



8, 16, 24, 28, 32, 35 and 53 seat vehicles
Available for hire for all Occasions

- * Airport and Seaport Transfers
- * Theatres
- * Sporting Events
- * Weddings
- * Schools
- * Dog & Horse Racing Events
- * Day Trips

PHONE NOW FOR A FREE NO OBLIGATION QUOTE : 01299 270 207

www.mawleyoaktravel.co.uk
enquiries@mawleyoaktravel.co.uk

MAWLEY OAK GARAGES LTD

- *Historic car specialist
- *Servicing & Repairs
- * All jobs undertaken
- * Exhausts
- *Diagnostics
- *Clutches
- * Mawley Oak Tyre Centre

*We offer a local collection & delivery service .Courtesy car available *(conditions apply)*



SPECIAL OFFERS

MOT, Oil & Filter change from **£99** *(conditions apply) **Free** MOT with Any Full service MOT'S ONLY **£42**

Call on 01299 270 207 and ask for the workshop OR Email at: Mikemawleyoakgarages@gmail.com

Mawley Oak Shop & Travel Office

Mon To Fri 9:00am—5:00pm

Selling Red Diesel, Coal, Logs, Kindling, Paraffin, Oils & Lubricants, Confectionary ,
Drinks, Cigarettes, Sandwiches

Mawley Oak WORKSHOP

** New opening Time's**

Mon To Fri 8:00am—5:00pm

Tel Cleobury Mortimer 01299 270207

CLEOBURY MORTIMER SPORTS & SOCIAL CLUB MAY 2017 ENTERTAINMENT PROGRAMME

**Sky and BT
sports**

Juke box

Pool Table

**Fantastic
outside space**

**Everyone
welcome**

Club available for private hire

£50 non members

£45 members

Don't miss our

End of term

Disco Friday 26th of

May from 4 till 7pm

Please note that

children should be

supervised at all times

Next month sees the

start of our "Friends of

the club initiative" ask

the staff for details.

*2017/2018 Memberships are now
due with fees staying the same for
the 3rd year in a row!!*

**CHECK OUT OUR NEW
FACEBOOK PAGE
Cleobury Mortimer
Sports&social Club**

Call us on 01299 271448

Pop in and see us

CLEOBURY'S RUGBY HEROES ON THE UP



Made it! Josh Phillips gets it over the line for another try in

Cleobury's final match of the season Cleobury's Rugby Club has a great history for such a young body. It's just 25 years old - a real babe compared with the big boys - but has a lot to be proud of. Let's not forget that in 2006 the first Shropshire team to play in a match at Twickenham came from this small town. We lost to a Dorking side that included a range of internationals who just overwhelmed our inexperienced country lads, but the 100 or more year old Surrey club were well impressed by the sheer spirit that their Shropshire opponents brought to the game.

At the end of this season they are waiting for confirmation that they are moving up to the Midlands West 2 North League. Not a title to strike fear into your heart unless you know the sport well, but club captain Will Bache has no illusions; it's going to be a testing time next year.

All the signs are good, with a body of 50 or so players to choose from. That's been boosted in the past year with coach Robbie Yapp moving his Colts squad from Kidderminster to join the Cleobury side after they'd won their Junior league. A move like that, from big town to a small one, tells you a lot about the enthusiasm and depth of talent coaches can see here. It means a greater pool of over 18 year olds that can be called on.

In their final match of the season, Cleobury met old rivals Ludlow, with a record crowd on the sidelines to cheer on both sides. Ludlow prevailed this time, with a 54 - 19 victory, which leaves a score to be settled next time the sides meet.

The strong social side of the game emerges here and Clare Todd counted three father-and-son combinations playing over that weekend, including Colin

Todd with stepson Tom Redfern. Tom is a product of the local talent nurturing process, who's coached internationally and is now employed by the Rugby League to develop play in the county of Hertfordshire.

I can remember Tom as a Lacon Childe pupil who worked at his game for long hours, still taking spot kicks out on the field while there was any daylight left to see the goal clearly. It was more than raw talent that carried him to his current level of success, it was single minded determination of a very high order.

There's been a strong streak of discipline in the way the club is run, right from the start. Young men who once could get into a wee bit of trouble if they'd had a good night became upright and orderly in their green blazers with the club badge on their breast pockets. They can still drink their share, but when they're wearing that badge there's an air of self control few non-players can match. Keen runners are much the same, able to let their hair down, but stay in control. Sport does a lot more for a community than too many people fail to recognise. JR



THE CLEOBURY
COUNTRY CENTRE

Contacting us:

t: 01299 272 300

e: business@cleoburycountry.com

www.cleoburycountrycentre.com

Training Courses Upcoming:

AAT in Accounting May/June £325 + VAT

Paediatric First Aid May £112 +VAT

Food Hygiene L3 £325 + VAT

Cleobury Country Centre, Love Lane, Cleobury Mortimer, DY14 8PE

Business Networking Meetings:

Wednesday 10th May 6-8pm

@ Cleobury Country Centre

For more information on networking & courses
please call The centre

SKELLERNS

DOORS & WINDOWS



- UPVC Fascias & Guttering
- UPVC Windows, Doors & Conservatories
- General Home Improvements
- Re-roofing & general building work
- Replacement Glass
- Patio Jet Washing



Free No-Obligation quote. FENSA registered company with years of experience

Call Mike on: 01886 812250 or mobile: 07814 577739
www.skellernsdoorsandwindows.co.uk

Elite Sweeps

Professional Chimney Sweep

& HETAS Stove Installer

- ✓ Prompt, reliable & friendly service.
- ✓ Cowls and Chimney Pots fitted.
- ✓ Fully qualified and fully insured.
- ✓ Guild certificates issued after every sweep.
- ✓ HETAS Approved Installer.

Call Eddie Tel. 01299 382222 / 07895 612915

www.elitesweeps.co.uk



Garden Design & Landscape Architecture

- * Female garden designer & qualified Landscape Architect.
- * Providing innovative Garden Design solutions and Landscape Architectural services.
- * Domestic and commercial clients, no job too small, all jobs considered.
- * For professional and friendly advice, please call 07769 919 197
- * Call NOW for Garden Designs over Autumn/Winter...ready for Spring Build !!



Quercus Landscapes Ltd

Find us on

BLOCK³ ARCHITECTS

Holly Cottage Baveney Wood Clebury Mortimer Worc DY14 8JB

Whether it is a new build project, conversion or extension we provide creative and sustainable architectural design solutions from sketch design to completion

If you require assistance or advice on any building or planning related matter, please feel free to call me



Tom Rogers BA(Hons) Arch PG(Dip) RIBA T 01299 841111

M 07812 196 967

E tom@b3a.co.uk

W www.b3a.co.uk

IS THIS THE RETURN OF THE ASBO RABBIT?

It's a long time ago when the Clarion had a scoop with the story of the ASBO Rabbit. For those don't remember what that was all about, an ASBO was an Anti Social Behaviour Order that could be served on anyone who was a regular nuisance. You can use other words in that sentence, of course.

The effect was supposed to be a feeling of shame, but for many having an ASBO was almost like a military award and regular offenders wore the title with pride.

At the time, Rachel Siddall was living in Whitcomb's Orchard and amongst the family was a rabbit who had a strong wanderlust. He'd disappear and savage a neighbour's prize blooms before moving on. The neighbour was not happy, complained to the authorities and after attempts to catch and control bunny they issued an official warning to Rachel, the official delivering the document explaining that it was like an ASBO for the animal.

That was too good to miss and the ASBO Rabbit became part of Cleobury Mortimer legend. Not likely to be repeated, you'd think. If you hadn't met Duchess.



Meet Duchess. A Lion Headed Cross, apparently. Very cross on occasions.

Duchess came into our family as a gift, a rather timid young lady with an unusual ear arrangement of one up and the other down. Not so much lop eared as lop sided.

She shares the back garden with Jenks, my 12 year old Cocker Spaniel, whose blindness through glaucoma has not curbed his scavenging habits. If

it's food, he'll have it. Including the overflow of seeds from the rabbit hutch, a regular source of extra snacks.

But Jenks's blindness means he blunders around and occasionally bumps into other animals. The three cats know to move out of his way, but Duchess, the bigger of two rabbits, doesn't see it that way. On one occasion the two met and she bit his nose, which produced a warning growl but no pursuit. Not if you're blind.

What is happening now is that the dog wanders, sniffing and scavenging. But Duchess has outgrown her timidity and runs at him, occasionally bumping into him, but mainly passing in front of his nose at some speed, which he feels and flinches away.

It's reached the point where the dog will head for the steps to the patio and begin to climb, at which stage Duchess dashes past and waits at the top. When the dog becomes aware of the rabbit, he turns and goes back down. I have to step in and usher him indoors while chasing the rabbit away. Is another ASBO the answer?

Soap products include

- White moisturising soap - Hand made with goats milk and coconut oil.
- Pink Floral soap - Hand made with a hint of Rose oil.
- Mauve relaxing Soap - Hand made with Lavender oil. £4.00 for a box

Moisturiser products include

- Coconut moisturiser - Hand made with natural cocoa butter and Coconut oil.
- Rose moisturiser - Hand made with natural cocoa butter and a hint of Rose oil.
- Lavender moisturiser - Hand made with cocoa butter and a hint of Lavender oil. £2.00 a pot

Contact Johnston.C@laxon-childs.org.uk

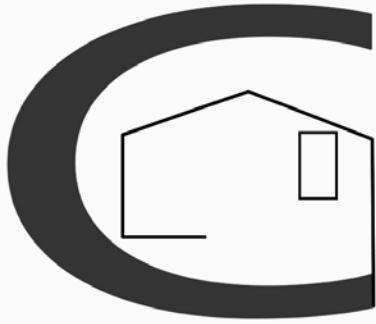
To order your cosmetics.

Ideal gifts for Birthdays and Mothers day!

Lip Balm products include

- Natural lip balm - Hand made with Beeswax.
- Rose lip balm - Hand made with Beeswax and a hint of Rose oil. £1.20 a pot

Order a box of your chosen soap, moisturiser and lip balm for £4.50



Chris Stokes
**Roofing &
Building**

www.proroofer.co.uk
tel: 01584 890069
mob: 07853 461290



Now at Cleobury Medical Centre

- Free hearing health checks
- The latest hearing aids
- Repairs and servicing
- Tinnitus Advice
- Independent advice and aftercare service

Tel: 0800 731 8545 Email: clearhear@btinternet.com Web: www.clearhear.co.uk

Alexander & House

Alexander House is a national, award-winning, Chartered firm of Independent Financial Advisers and Wealth Managers who can provide advice to individuals and businesses.

**Contact Nigel Porter
locally on 01584 892098
or 07974 085141**

Financial Advice on Your Doorstep

Investment
Planning

Retirement
Options

Reducing
ongoing
charges / costs

Auto-enrolment
- understanding
your obligations

Reducing Tax

Divorce

Protecting you, your
family and your estate

Office: 0800 316 1811 / info@alexanderhousefs.co.uk
www.alexanderhousefs.co.uk

Alexander House Financial Services Ltd is an
appointed representative of CAERUS Financial Limited



OUR COMMUNITY CELEBRATION

June 10th promises to be a big day, with loads of attractions building up to fill most of the available space. There's been some great work put in by the people running the various areas of the show and it looks like being a full day if you want to see the lot.

This mention is just a reminder of the date and a suggestion that you keep that day free. In next month's issue we'll have full details of the exhibitors and where you can find them. Much of the event will be on the Love Lane Sports Field, but other venues have been added and will have a lot to tempt you. See you there!

'THE BOX' AT MOFFATS



A very unusual performance was staged in Moffats School at the end of March. It was a performance of 'The Box', a play written by the school's founder, Natalie Engleheart. It tells the story of the opening of Pandora's Box, then turns to the story of Hercules and Giant Antaeus in the Kingdom of the Pigmies.

Remarkably, both cast and technical crew were all aged between 9 and 13, which naturally earned high praise from the audience. Director Robin McCarthy, the author's grand-daughter explained: "We have a proud tradition of drama - there is no need to dumb everything down for the modern child. They have to be word-perfect, as there is no backstage prompt. The secret is that they love it."

The event was raising funds for the DEC Appeal for East Africa and succeeded in making £300 for that cause.

Our picture left shows Pandora and Mercury, played by Daisy Pitt and Misha Kent.

LOST AND FOUND

John Carter is well known as an antiques authority and organiser of some very effective auctions at his venue near Bromsgrove. Few of us will know back in the 1970s he was lead vocalist,

songwriter and rhythm guitar player with 'Early Warning'. Not a name that hit the big time, but they were a gang of mates who played the clubs and attracted attention with some of John's compositions. Enough to get them a week at a recording studio in Luton (told you they weren't exactly Big Time, didn't we?) that produced some darned good stuff. But the more urgent matter of earning a living and sorting out some domestic grief got in the way and the band split.

John has recently found the original master of that recording session. He's contacted the surviving members of Early Warning and a noted record producer has taken the tape and produced a commercial level disc that is being produced under the title 'Lost and Found'. It sums up the whole, long story.

The disc is available on Amazon if you type in 'Early Warning - Lost and Found', because there's a German group using that Early Warning name. We've listened to the original pre production disc, which is pretty good, especially the lead guitar and John's lyrics. One song about having spent the night sounds very much like the Stones' 'Let's Spend the Night', but who was first? Pity it was Lost, glad it's Found. JR



CLEOBURY CHIROPRACTIC

31 High St. DY14 8DQ

www.notjustaboutbackpain.com

A refreshingly gentle method of chiropractic suitable for all ages.

- * BACK PAIN * SCIATICA * POSTURAL PROBLEMS
- * SCIATICA * SPORTS INJURIES * JOINT PAIN

PLUS * CORPORATE COMPUTER (DSE) WORKSTATION ASSESSMENTS

* BACK CLASS - Weekly exercise class for those with back/neck pain

Sue Brown MA MSc DC MMCA

07932 00 00 28






M&M timber

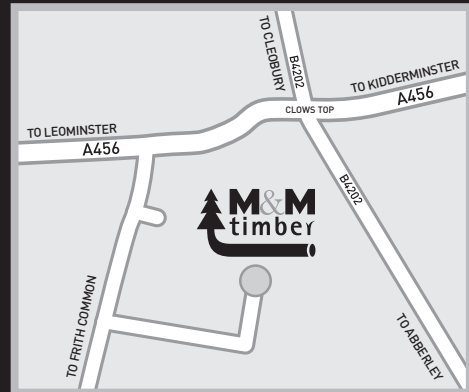
FACTORY OUTLET

Fence Panels / Stock Fencing / Firewood
Wood Shavings / Planters / Sleepers
Summerhouses / Sheds / Trellis

**End of line products
at amazing prices to clear**

 Like our Facebook pages for weekly offers

Mon to Fri 9am to 4pm
Sat 9am to 12noon
Closed Sundays &
Bank Holidays
Call 0333 003 5133



**CLOWS TOP,
KIDDERMINSTER, DY14 9HY**



Financial Accountants

We are local Accountants who provide a quality service at competitive prices

Not VAT registered so you save 20% on your fees immediately

We can help with the following :

Bookkeeping
Payroll/PAYE
Accounts Preparation
Business and Personal Tax
VAT
Business Start-ups/Financing
Company Formations/Secretarial
Business Advice

Area covered 15 miles of Cleobury

To include :
Cleobury Mortimer
Kidderminster
Tenbury Wells
Bewdley
Bridgenorth
Stourport-on-Severn
Ludlow

Speciality in pub/restaurants and building contractors including CIS sub-contractors

Member



BRITISH INSTITUTE OF INNKEEPING

For a free quote :

Tel : 01299 272647 or mobile 07779 011819

Email : paul@paefinance.co.uk

Website :www.paefinance.co.uk

Community Contacts for Clarion Readers

CEMETERY ADMINISTRATOR	Theresa Ray	07703 965 064	theresa.25016@hotmail.co.uk
CLEOBURY COUNTRY CENTRE		01299 272300	In Love Lane, 9 to 5 Mon to Fri.
CITIZENS ADVICE		08444 991100	Advisors on line 10.00 to 4.00
CLEOBURY CARERS	Wendy Duley	01299 270562	
CLEOBURY COMPASSIONATE COMMUNITIES	Katja Ward	01299 270018	10.00 to 12.00 Weds
CLEOBURY MORTIMER LIBRARY		01299 272301	Open 9 to 5 Monday to Friday and 10 to 12 Saturday
LOCAL POLICE	Constable Anne O'Leary		ann.oleary@westmercia.pnn.police.uk
CLEOBURY MORTIMER GUIDES	Dorothy McBride	07761 976610	
CLEOBURY MORTIMER SCOUTS	Ingrid Purslow	01299 270314	
CRIMESTOPPERS		0800 555 111	Free Police contact. Talk in confidence, to report any crime.
DOMESTIC VIOLENCE HELPLINE		0800 783 1359	Women's Aid, 24 Hour support:
HOME FROM HOSPITAL		01584 878046	Help over the first weeks back home from Age UK
MARKET HALL	Dorothy McBride	07761 976610	dorothymcbride@cleobury.org.uk
MEDICAL CENTRE		01299 270209	Out of surgery hours, use the Shrop Doc Service.
SHROP DOC		08444 068888	Service available evenings and weekends
THE PHARMACY		01299 270219	Closes for half day on Saturday. Delivers prescriptions
NEWLIFE CHURCH	Pastor E Stirrup	01562 630595	Sunday services at 10.30
NIGHTINGALE NURSING FUND	Rosemary Abbiss	01746 718451	
PARISH COUNCIL	Clerk Matthew Sheehan	01299 271154	Market Hall 9 to 2 pm, Mon to Fri. www.cleobury.org.uk . Council meets in the Market Hall on the first Monday of the month
POST OFFICE		01299 270211	In the Spar Grocery Store, Church Street
SAINT MARY'S YOUTH PROJECT	Mark Greaves	07828 116810	mark.stmarys@live.co.uk
SHROPSHIRE COUNCIL		0345 678 9000	
SOUTH SHROPSHIRE YOUTH FORUM			richard@ssyf.net.
VOLUNTARY CAR SCHEME		01299 666119	for bookings
WASTE DISPOSAL		0345 678 9007	The contractor is Veolia
WATER SUPPLY EMERGENCIES	Severn Trent	0800 783 4444	

Collect the Clarion in Cleobury from: Spar Grocery, M & M Baldwin, The Londis Store, Cleobury Cafe, The Severn Hospice Shop, Harry Tuffin's, Carrot Tops, The Library and Simply Fresh. Or, **Out in Cleobury Country at:** Heath Farm Meats, **Bagginswood**; Post Office **Clee Hill**; Village Store, **Cleobury North**; **Clows Top Stores**; The Sun and Slipper, **Mamble**; **Hopton Bank Service Station**; **Ludlow Library**; **Mawley Oak Garage**; The Colliers Cafe & Shop, **Rock**; The Fighting Cocks, **Stottesdon**; The Duck Inn, **Chorley**; The Live and Let Live, **Neen Sollars**; The Eagle and Serpent, **Kinlet**; Parker Motors, **Ditton Priors**.

THE DEADLINE FOR THE JUNE ISSUE IS MAY 23rd

Editor and Advertising Sales: Jim Reynolds, 4 Childe Road, Cleobury Mortimer, Shropshire DY14 8PA. Telephone: 01299 270642 Mobile: 07410 977 212
E-Mail: editor@cleoburyclarion.co.uk or uncle.jim@icloud.com
The Clarion On The Web: www.cleoburyclarion.co.uk

The Clarion is published by Cleobury Clarion Media Ltd and printed by Glint Print (01299 266657)



Cleobury Mortimer

Kidderminster

36 High Street
Cleobury Mortimer
DY14 8DQ

71 Coventry Street
Kidderminster
DY10 2BS

01299 271477



Cleobury Meadows
Cleobury Mortimer

£250,000

A well-presented four double bedroom property within walking distance of Cleobury Mortimer town centre and local schools.
EPC D



The Hurst
Cleobury Mortimer

£600 pcm

Beautifully presented character cottage, located within a short walking distance to Cleobury Mortimer town centre.
EPC E

Residential Sales

“How long will it take to sell my house”, has to be one of the most commonly-asked questions aimed at estate agents every day. The national average time for finding a buyer is around eight weeks - that’s from putting your house on the market to accepting an offer, and not counting the subsequent legal proceedings, land searches and so on. How quickly a property sells can depend on how quickly **you** want to sell it, whether you want to hold out for the right offer to come along or you want to be sold within a matter of weeks.

Read more of this blog at www.nockdeighton.co.uk



Erica Hinwood
MARLA MNAEA
Office Manager

Lettings

The Government has announced that Client Money Protection (CMP) will be mandatory for all lettings agents across England which we at Nock Deighton are delighted about! This is fantastic news for landlords and tenants because CMP gives them protection in the event that a lettings agent misappropriates their money. As members of ARLA PropertyMark, we have been supporting the campaign for providing landlords and tenants with this support and more. It is another step towards the lettings industry becoming more regulated, which is a positive move for everyone involved - reputable lettings agents, landlords and of course tenants.



Coral Walrond
MARLA MNAEA
Lettings Negotiator

PROPERTY AGENTS | VALUERS | SURVEYORS | AUCTIONEERS

www.nockdeighton.co.uk

CLEOBURY MORTIMER | KIDDERMINSTER | LUDLOW | BRIDGNORTH | IRONBRIDGE | NEWPORT | TELFORD | LEOMINSTER